

a voice  
for the natural  
landscaping  
movement

# Wild Ones®

NATIVE PLANTS, NATURAL LANDSCAPES

## JOURNAL

MAY/JUNE 2010  
VOL. 23, NO. 3

### inside

Notes from the President:  
Reading the signs of  
progress. 2



Wild Ones in the 21st  
Century: *Wild Ones*  
*Journal* available online. 3

Grapevine: Analogies, greenish  
pesticides, and an interesting twist. 5

Next Generation: Using your nose. 6

Invasives on the Horizon: Japanese  
knotweed – Godzilla of  
the plant world. 7

Seeds for Education  
Grants for 2010. 8



Add some spice bush to  
your landscape. 10

The Xerces Society for Invertebrate  
Conservation: Protecting the little things.  
11

Native Plants: Beyond the bird feeder –  
wild columbine. 12

Growing Wild Ones:  
Strategy planning notes.  
13



Chapter notes. 14

Photo contest 2010. 15

Wildflowers and native plants in the  
desert. 16

Business and Affiliate Organization  
Members. 19

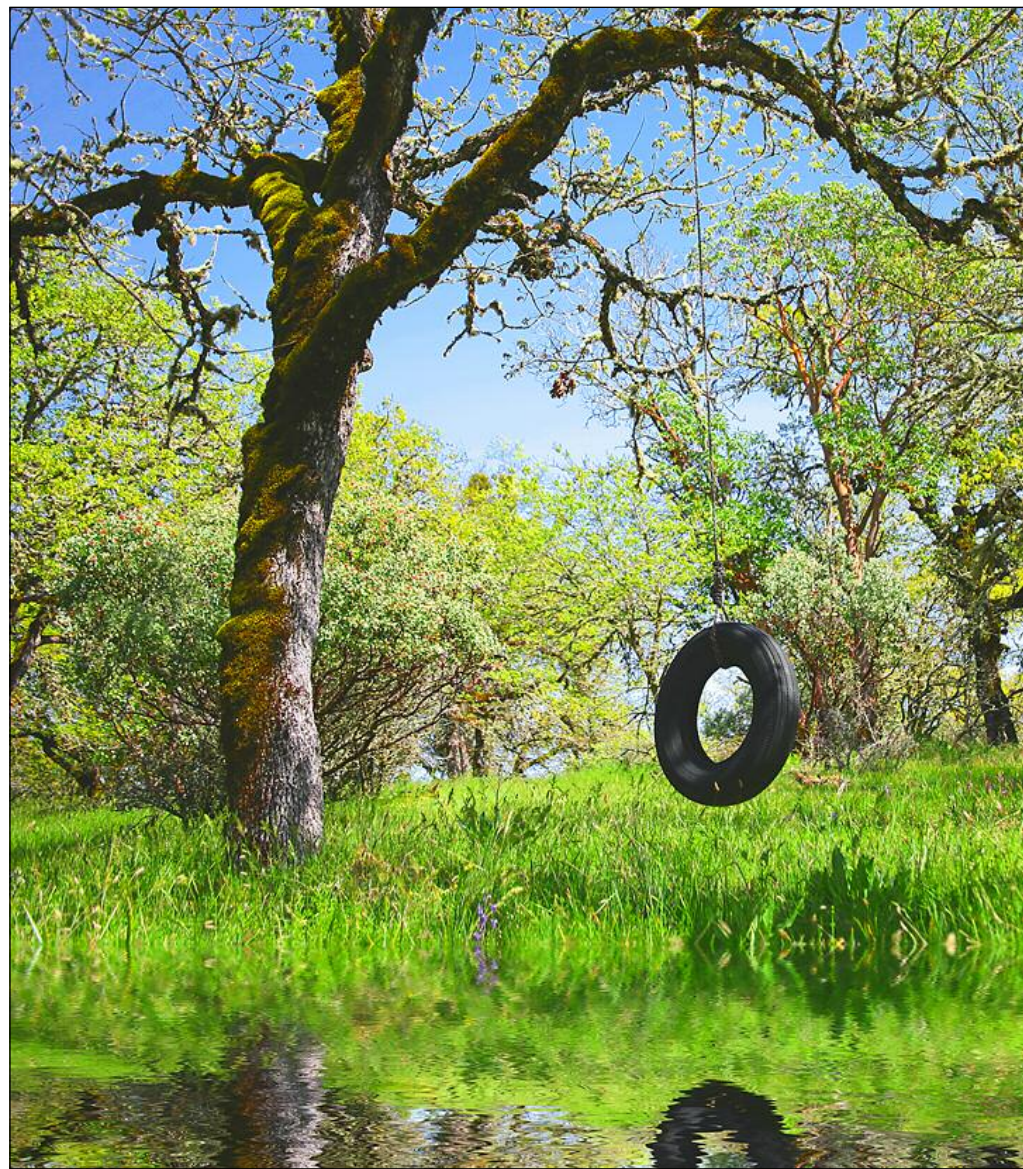
The Meeting Place: Chapter contact  
information. 20

Mark your calendars:  
Upcoming board  
meetings. 23



Thank You. Back cover.

Working toward our next  
30 years restoring native plants  
and natural landscapes.



## Why Do We Care?

Why do we do what we do? And why are we committed to conserving and protecting natural resources – often against enormous odds? It's probably not for the money. Or the glory. It's time to examine some very non-scientific, very "human" reasons why we care – things such as "imprints" left by childhood hideouts – and why we remain committed to this lifelong mission.  
By Janet K. Clark

Land stewardship is hard work. Problems are immense and complex, and we look to the best available science for solutions. And it's important to understand the scientific accounts – from biotic interactions on broad landscapes, right down to the cells in a leaf and the micro-organisms in the soil.

CONTINUED ON PAGE 4



## Native Plants. Natural Landscapes. Reading the Signs of Progress



I think we are making progress: Landscaping with native plants is no longer the oddest thing on the block – an unknown concept – a likely cause of conflict (though I know some of you still get some heat from the neighbors). Is anyone else getting the same feeling? I hope so, because it is a good one.

When I worked for a native plant landscaper 11 years ago, it took a long time to explain to people what we did, why it was different, how it was better. Today I rarely have to explain what native plants are. The mention of “sustainable landscaping” typically gets at least a smile and a nod, if not outright enthusiasm and a long list of questions.

### There are little signs.

Annette Robertson of the Milwaukee North (WI) Chapter told me, when we met at the 2009 strategic planning meeting, about how, when she first replaced their lawn with native landscaping at their home on Lakeshore Drive, a busy Milwaukee thoroughfare, some neighbors complained that she was lowering home values in the neighborhood. Lately she’s been told by realtors, “If you ever want to sell your home, let me know. I have clients that would love a yard like that.” A realtor friend of mine in Duluth confirmed that there is a growing number of people that put a priority on finding an ecologically-friendly home, and understand that a giant lawn is not what it’s all about (whereas native plants and the hokey pokey is what it’s all about).

I gave my hip hairstylist a copy of the *Journal* and said, “This is what I’m into lately – check it out.” She read it, got jazzed, and joined Wild Ones because the concepts really grabbed her. No arm twisting was needed.

### There are big signs.

The new “Sustainable Sites Initiative: Guidelines and Performance Benchmarks 2009” is to landscaping what the Leadership in Energy and Environmental Design (LEED) certification is to buildings. The

*People are beginning to realize that a giant lawn is not what it's all about*

guidelines *require* control of invasive plants, and encourage use of natives in several ways. A design receives points for preserving or restoring appropriate site biomass (trees, shrubs); specifying native plantings; preserving or restoring plant communities native to the ecoregion; and using vegetation to minimize building heating and cooling requirements. Many building codes are being updated to set standards for landscape design that are much friendlier, to both humans and ecologically, favoring native plants. I am optimistic that the combination of new guidelines and local standards will change the norm of landscaping in public places. This can only help change the norm for home landscapes as well.

So if you’re new to Wild Ones – welcome. This is where it’s at. If you’re a long-time supporter – thanks. We still have a long way to go, but your support and hard work is paying off. ▲

Carol Andrews, Wild Ones National President (president@for-wild.org)

Wild Ones: Native Plants, Natural Landscapes promotes environmentally sound landscaping practices to encourage biodiversity through the preservation, restoration, and establishment of native plant communities. Wild Ones is a not-for-profit, environmental, educational, and advocacy organization.

### NATIONAL OFFICE

#### WILD Center

2285 Butte des Morts Beach Road  
Neenah, Wisconsin 54956

#### Executive Director

Donna VanBuecken  
P.O. Box 1274, Appleton, WI 54912-1274  
877-FYI-WILD (394-9453)  
920-730-3986  
Fax: 920-730-3986  
execdirector@for-wild.org

#### President

Carol Andrews • 218-730-9954  
president@for-wild.org

#### Vice President and Communications Committee Chair

Chris McCullough • info@for-wild.org

#### Secretary

Joe Powelka • 608-837-6308  
secretary@for-wild.org

#### Treasurer

Marty Rice • 952-927-6531  
info@for-wild.org

#### Past President

Bret Rappaport  
info@for-wild.org

#### Seeds for Education Director

Mark Charles • 734-973-0684  
sfedirector@for-wild.org

#### Web Site Coordinator

Peter Chen • wdmgr@for-wild.org

#### MEETING COORDINATOR

Mary Paquette • 920-994-2505  
meeting@for-wild.org

#### BOARD MEMBERS

Carol Andrews, Minnesota, 10  
Patricia Armstrong, Illinois, 12  
Kathy T. Dame, Connecticut, 12  
Steven Windsor, Illinois, 12  
Tim Lewis, Illinois, 12  
Chris McCullough, Ohio, 12  
Carol Phelps, Michigan, 12  
Diane Powelka, Wisconsin, 10  
Joe Powelka, Wisconsin, 10  
Bret Rappaport, Illinois, 12  
Maryann Whitman, Michigan, 10  
Marty Rice, Minnesota, 10  
Karen Syverson, Wisconsin, 12  
Scott Woodbury, Missouri, 10  
Janet Allen, New York, 10

#### HONORARY DIRECTORS

Neil Diboll, Wisconsin, 13  
Bonnie Harper-Lore, Minnesota, 13  
Lorraine Johnson, Toronto, Canada, 11  
Darrel Morrison, FASLA, New York, 11  
Lorrie Otto, Washington, Lifetime  
Guy Sternberg, Illinois, 11  
Doug Tallamy, Delaware, 13

*Wild Ones Journal* (ISSN 1551-9155) is published bimonthly by Wild Ones: Native Plants, Natural Landscapes. Views expressed are the opinions of the authors. *Journal* content may be reproduced for non-profit educational purposes as long as the *Journal* is credited as the source. Individual articles that carry a copyright are the property of the author and cannot be reproduced without the author's written permission. No artwork may be reproduced, except to accompany its original companion text, without written permission of the illustrator or photographer. Contact editor if in doubt about use rights. Manuscripts and illustrations are welcome; Wild Ones does not pay for articles, photos or illustrations. For guidelines for submitting material, contact editor or see Wild Ones web site. Advertisers: Contact National Office for rates and schedule.

#### WILD ONES JOURNAL EDITOR

Maryann Whitman • 248-652-4004  
journal@for-wild.org  
(Please indicate topic in subject line.)

#### WILD ONES JOURNAL STAFF

Janet Allen, Contributing Editor  
Barbara Bray, Contributing Editor  
Mariette Nowak, Contributing Editor  
Donna VanBuecken, Contributing Editor

Wild Ones recommends that you patronize businesses that support our policies regarding species provenance and habitat preservation. The appearance of advertising in the *Journal* does not constitute an endorsement by Wild Ones of any organization or product.

Copyright © 2010 by Wild Ones.

*Printed on recycled paper.*

## Writers & Artists

**Janet Clark** lives in Bozeman, Montana. She is the former Director of the Center for Invasive Plant Management, and in 2006 was appointed by the Secretary of the Interior to serve on the National Invasive Species Council.

**Barb Bray** is a member of the North Oakland (MI) Chapter, a Contributing Editor of the *Journal*.

**Janet Allen** is a Contributing Editor for the *Wild Ones Journal*, and President of the Habitat Gardening of Central New York (NY) Chapter.

**Mariette Nowak** is a Contributing Editor of the *Journal*, and a member of the Milwaukee-Southwest Wehr (WI) Chapter.

**Mark Charles**, Ann Arbor (MI) Chapter, serves as Wild Ones Seeds for Education Director.

**Edna Greig** is a PAL member living in New Jersey. She has been studying, growing, photographing, and writing about native plants of the eastern United States for more than 30 years.

**Jennifer Hopwood** is the Eastern Outreach Coordinator for the Xerces Society, and a member of the St. Louis (MO) Chapter. She provides invaluable information on the insects our native plants support.

**Steve Windsor** is a new member of the National Board. He is a member of the Greater Dupage (IL) Chapter.

**Margaret Furman** writes and lives in California. The article we reprinted first appeared in the *Hesperia Star*, California.

## Wild Ones in the Media

The *Seattle Times* ran a nice interview with Lorrie Otto. You may read it at: [seattletimes.nwsources.com/html/localnews/2011399197\\_otto21m.html](http://seattletimes.nwsources.com/html/localnews/2011399197_otto21m.html).

In the Summer 2010 issue of *Nature's Garden* (a *Better Homes and Gardens* special-interest issue, available on magazine stands), Janet Allen's and Pat Hill's gardens were admirably photographed, and both women were interviewed. Janet serves as President of the Habitat Gardening of New York (NY) Chapter of Wild Ones. Pat is a member of the Northern Kane County (IL) Chapter.

## Wild Ones in the 21st Century

Since the *Wild Ones Journal* became available online on the Wild Ones web site, members have been exchanging some innovative thoughts.

Certainly these color versions of the *Journal* have drawn praise and descriptions like "eye-popping" and "vibrant," along with being educational.

But more than that, Wild Ones members have suggested a number of options for taking advantage of our web access to the *Journal*.

To save trees, printing and mailing costs, (a very green ethic), some have suggested that we should stop sending hard copies of the *Journal* to those of you who request this. We can do that. If you would like to stop receiving hard copies of the *Wild Ones Journal* you have only to let us know – and make sure that we have a valid e-mail contact for you.

We need to tell you, however, that, while you will indeed be saving trees, printing and mailing costs your subscription rates will not decrease. The actual savings to the organization will be minimal – unless, of course, we go *entirely electronic* – no hard copies produced.

Another idea submitted by some members is that we make the *Journal* available online to anyone and everyone, paid-up member or not. The reasoning behind this suggestion is that our stated mission is to educate, and what better way to do this than to make the *Journal* accessible to all as soon as it's produced. The *Journal* would then be available for Tweeting, for Facebook exchanges, for blogging posts. This could spread our name far and wide, and potentially attract new members.

Both of these ideas (going entirely electronic with the *Journal* and/or making it available online to all, not just members) are being considered by the National Board of Wild Ones, which is working very hard to maintain a balanced budget. This balancing effort would be easier if either or both of the following two things happened:

- We significantly cut the costs of printing and mailing the *Wild Ones Journal*;
- We grow our membership to over 3,000.

This year, if our membership numbers don't rise sufficiently before the November/December issue goes to press, that issue will be entirely electronically distributed to ensure a balanced budget.

In the meantime, please take advantage of the color issue on our web site. It is available to each of you even before you have received the mailed hard copy. We'll even send each of you an e-mail telling you when the most recent issue has been posted on the web site. Check it out – you may be pleasantly surprised. ▲

### Not sure how to read the Journal online?

1. Go to the Wild Ones web site at [www.for-wild.org](http://www.for-wild.org).
2. Click the "Member Login" button near the top right-hand corner of the page.
3. If you have not previously registered with our web site, follow the registration instructions.
4. For registered users: Log in by entering your e-mail in the "Member E-Mail" box, and your password in the "Password" box.
5. On the "Wild Ones Member" page, click the "Online Journal" link.
6. You may be prompted to log in again.
7. On the "Download/Journal" page, choose the issue you want to read, and click the appropriate link to view the file.
8. Depending on the configurations of your operating system, your web browser, security settings, and other add-ons, you may have to deal with various pop-up messages. If Adobe Reader is not installed on your system you may be prompted to download and install it.
9. Online *Journal* issues vary between 20 and 24 pages, with color graphics. This could result in a wait while the PDF file downloads to your computer. If you have a slow Internet connection the wait could be several minutes.
10. If you prefer to not view the *Journal* in your browser, and would prefer to download and print the file, right-click the link leading to the *Journal* issue. If your computer is a Macintosh, right-click or hold down the "Option" key as you click the link. After the download process, locate the PDF file and print it.
11. To read older issues of the *Journal*, just click the "Journal" link on the home page.

But why do we do what we do? Why are we committed to conserving and protecting natural resources – often against enormous odds? It's probably not for the money. Or the glory. I would suggest three very non-scientific, very "human" reasons why we care, and why we remain committed to this lifelong mission.

First, we probably all had an outdoor "place" that we loved as children – an old tree to climb and sit in, a creek full of mud and tadpoles, a weedy vacant lot, our grandma's vegetable garden, maybe a swingset in the back yard. Here we poked around and daydreamed. Here we built forts or whistled at birds or turned over rocks to see what lay beneath. These childhood hideouts started imprinting on our young brains that nature equates with "good," "interesting," "fun" – maybe even "escape."

I grew up in the suburbs of Chicago and Philadelphia. "Nature" was not particularly a topic of conversation in our family – it just wasn't relevant in our perceptions of our day-to-day lives in suburbia. But every summer we spent several wonder-filled weeks at my grandparents' cottage on Lake Huron. Water, boats, trees, rocks. No cars, no TV, no telephone. This is where I first saw dragonflies and water lilies and rattle snakes and northern pike. Where my brothers and I were cut loose to row out to an island and go exploring. Where my grandmother showed us how to make pipes out of a hollow grass stem and an acorn stuffed with cedar. Where we'd lie for hours on the dock, dangling strings with big hooks baited with bread, trying to catch the little sunfish under the boathouse. It's where I discovered that the outdoors could be fascinating.

Our outdoor memories formed us. So this is one of the reasons that we care for the land – because we understand how important it is to protect special places where kids *and* adults can experience the fun and wonder of the outdoors. And we do it because this connection with nature is elemental to who we are as individuals.

Another reason we care may trace back to our discovery of a creature or concept that absolutely stunned us regarding the "miracle of nature" – maybe something we studied in school, or saw on TV, or experienced personally. Whatever it was, it astounded us, and caused us to really see

something we might have previously taken for granted.

Consider the monarch butterfly. Weighing less than a gram, this delicate, brilliantly orange-and-black insect migrates in the fall from eastern North America, up to 3,000 miles, to the Sierra Madre Mountains of sunny Mexico, to spend the winter. It has never before made the trek south; the movement of the sun directs its internal biological compass. Along the way it seeks flower nectar to maintain its energy for this incredible journey. Tens of thousands of monarchs may cluster on a single oyamel tree in the Mexico highlands. After a winter of hibernation and then mating in February, they head north again to the United States in early spring.

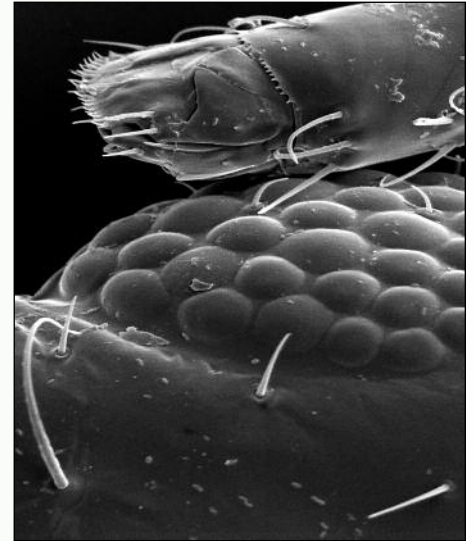
*Awe and wonder and humility in the face of the natural world is all we have to counteract the cynicism of this technological age*

Nature is generous with "wow" moments if we pay attention. For me recently, as a Westerner, it has been a realization of the remarkable life cycle of Pacific chinook salmon – how they hatch up to 800 miles inland in high mountain streams, migrate to the ocean, travel up to 10,000 miles around the Pacific over three to four years, then use their sense of smell to return as 10- to 50-pound adults to the exact stream from which they emerged, to lay eggs. And, like the monarchs, the cycle begins again.

In the natural world around us miracles abound – from the intricacies of an insect's eye to entire ecosystems that support and are a part of butterflies or salmon – and *us*. Awe and wonder and humility in the face of the natural world is all we have to counteract the cynicism of this technological age. Land stewards understand that. And that's why we do what we do.

The third reason we care is our connection to each other. Personally, as much as I can be awed by nature, at the more day-to-day level I do what I do because of the network of people I work with. We could not achieve very much without each other, and together we're doing great things.

For example, Cooperative Weed Management Areas (CWMA) are springing up all



Extreme magnification showing the holoptic compound eyes of a syrphid fly (*Eristalinus taeniops*). Photo courtesy of Wikimedia user Smith609.

over the country. This isn't a government-funded or even government-mandated program – this is a grassroots movement of individuals who have recognized a problem in their local areas, banded together, and set out a plan to tackle it. Each CWMA represents a group of people who – with great optimism and the best science they can lay their hands on – are working to improve their communities.

They are sharing resources, talents, and expertise. We just can't help but be inspired by stories of people setting up information booths at farmers' markets, of bringing in the Boy Scouts for massive weed-pulls, of knocking back non-native invaders from creeks, and restoring wildlife habitat. There's an awful lot of good in this world. And we're not alone. And it's not ridiculous or naive to be hopeful about the work we do.

One last note: Think about what makes a healthy plant community – diversity, a niche for all life forms, plenty of resources to live and grow, and resilience to bounce back from disturbances. These are the elements that make a healthy human community, too. There is a niche – and a *need* – for everybody. No matter whether we're knocking on doors in our neighborhood and handing out leaflets, or spending a Saturday pulling old tires out of a river, or planting native seeds, or speaking up at a county meeting, or organizing a conference – it's all important and it all fits together as we work to maintain and increase healthy environments. ▲



# Grapevine

By Maryann Whitman

## Analogies

When reading about the effects of chemicals on honey bees we would do well to remember that honey bees, in form and function, are quite similar to our native pollinating bees, bugs, flies, butterflies, and moths. Honey bees, however, are immediately understood to be connected to our economics and our food supply. And, because they live and work as “controllable” colonies, they are the subject of research into the side effects of pesticides.

The same attention has not been paid to our native pollinators who feed on the same nectar, and our native bees who provision their brood with the same pollen bread. It may reasonably be argued that our native pollinators are heir to the same effects of pesticides as are honey bees – and look what’s happening to them.

## Greenish pesticides

With the third National Pollinator Week coming up on June 22nd, we are reminded of the plight of honey bees, pollinators of one-third of our food. While honey bees have been seen to be declining over decades, from various causes, in 2006 a new concern, “colony collapse disorder,” was blamed for large, inexplicable die-offs, sometimes characterized by bees simply disappearing.

A recently published study shed more light on what bees deal with in the environment we share with them. Investigators found 121 different types of pesticide in the wax and pollen taken from beehives in 23 states. Sixty percent of the samples had at least one systemic herbicide – the sort of pesticide that is designed to spread throughout all parts of a plant. The panoply of chemicals in our environment grows by happy leaps and bounds. A minor stumbling block occurred in December, 2009, when a court ruling upheld a ban on the sale of a new “greener” pesticide that is designed to stop insect reproduction. Bayer, the company producing this chemical, has an interesting sense of what is “green.”

In recent years, there’s been a big move by U.S. farmers to turn away from broad-spectrum potent bug killers to the more “natural” and environmentally friendly pyrethroids. These synthetic chemicals have been fashioned after the natural pyrethrin bug deterrent in chrysanthemums.

Bifenthrin is used to kill everything from termites to fire ants, corn pests, and the mites that attack fruit trees. Delta-methrin is targeted at aphids, mealy bugs, whitefly, fruit moths, caterpillars on field crops, roaches, horseflies, mosquitoes, and fleas.

Out of China comes a study that investigated the effect of feeding honey bees with nectar laced with sub-lethal doses of pyrethroids. The queens in the colonies were also fed this same nectar. Clean queens laid a little more than 1,200 eggs a day – the treated queens laid roughly half as many – and of those, 15 percent fewer hatched. Of the hatchlings, 95 percent of the untreated group reached adulthood, and 55 percent of the treated hatchlings made it to adulthood.

In summary, the effects of these pesticides on bee colonies are quite clear. Pyre-

*Investigators found 121 different types of pesticide in the wax and pollen taken from beehives in 23 states.*

thrins and pyrethroids are neurotoxins, causing paralysis and death in insects. The Chinese study did not investigate if early exposure to the pesticide might lead to aberrant behavior in adulthood, like forgetting how to get home – which is one of the problems that appear to be correlated with colony collapse disorder.

## Preserving native biodiversity:

### An interesting twist

Our agroscientists quickly came up with

switchgrass as a possible crop for biomass for biofuel production. Knowing that monocultures should be avoided, other tallgrass prairie grasses were added: Big bluestem and prairie cordgrass. Recently cup plant was added to the mix. It’s a forb that routinely grows to 7 and 8 feet in height, and can hold its own among the tall prairie grasses. Like the grasses, it can store carbon in its massive roots.

Now here’s the twist: Cup plant is the only host plant of a moth (*Eucosma gigantea*), whose larvae feed voraciously on its rapidly growing terminal structures, often leading to complete loss of floral production and significant loss of biomass. “Turning cup plant into a commodity thus converts the giant *eucosma* into a pest of significant concern,” points out one of the researchers.

We all look forward to the next installment in this biomass-for-biofuel saga.

## Landscape architects rate hottest outdoor living trends

83.9 percent of residential landscape architects rate native plants as being hot landscape elements for the coming season. Native or otherwise drought-tolerant plants – 85.2 percent, reduced lawn – 73.9 percent, permeable paving – 72.5 percent.

In an article on maximizing the benefits of plants, in the American Society of Landscape Architects magazine, mentioned in the references and resources section: Native Plants, Natural Landscapes. Sound familiar? It should – it refers to us. Wild Ones – by the other part of our name. ▲



Is Wild Ones Really  
on Facebook?  
Yes. It's true.

facebook®

## Become a Fan of our Wild Ones page, and a Friend of Donna VanBuecken's page.

Stop in at our Wild Ones Facebook page to see what we’re saying about natural landscaping. It’s easy to become a “fan” of Wild Ones, and then whenever we add something new, you will be among the first to know about it. Our temporary address is:

[www.facebook.com/pages/Wild-Ones/220999458625](http://www.facebook.com/pages/Wild-Ones/220999458625)

Our National Director, Donna VanBuecken wants you to become her Facebook friend. This is important, because in the near future she’ll be using her Facebook page to make special announcements, and to let you know about other important Wild Ones news. Don’t be left out. Please go to her page, and “friend” her today:

[www.facebook.com/profile.php?id=100000561611806](http://www.facebook.com/profile.php?id=100000561611806)

# Using Your Nose

By Barb Bray



Skunk cabbage (*Symplocarpus foetidus*). Photo: Joseph O'Brien, USDA Forest Service, Bugwood.org.

Did you know that an angry rattlesnake smells like watermelon? A couple of years ago when I was raking fallen leaves, I accidentally raked up what was probably an eastern massasauga rattlesnake. Although it was only about 18 inches long, the snake still reared up and struck out menacingly at the air, toward me. I might have reacted much the same if someone had just scratched metal tines of a rake across my body. At that time I didn't realize that angry rattlesnakes gave off scents. Would I have stood there sniffing the air to see if this snake smelled like a watermelon? Maybe – or maybe I still would have raced up our deck steps to safety.

I wouldn't recommend provoking a rattlesnake just to see if they give off a scent, but I would recommend using your nose on your next nature walk. The natural world is full of many different smells, some good and some bad (at least to human noses). Early springtime brings long-awaited odors to our frostbitten noses – like the earthy smell of decomposing leaves or the green smell of new grass. Even the permeating odor of our black-and-white friend, the skunk, is a welcoming reassurance that spring approaches.

Damp woods are wonderful places to visit in the springtime, especially ones festooned with the robust green leaves of skunk cabbages. As you wander the path near these interesting plants, sample the air with your nose. Can you smell the pungent skunk-like odor of any of the leaves?

In the animal world, odors communicate messages, ranging from the location of food to potential mates. Ants lay down scent trails for other ants to follow to a food item. Maybe it's a dead moth or maybe it's your peanut-butter-and-jelly sandwich from your picnic basket. When an ant marks a trail, the odor rises in the air, and can attract nearby ants. I've never smelled an ant trail, but I've seen them plenty of times. You can't miss the line of ants all following the one preceding, in a meandering, single-file column. They're following a "smell-trail."

Neither can you miss one of the scent markers for rabbits. Have you ever noticed how many droppings rabbits leave behind? Rabbits scatter unscented droppings, but they pile up scented droppings to mark the boundaries of their territories. By the way, I am glad I am not a rabbit. Male rabbits mark their chosen female by spraying her with urine.

Once you have practiced the art of sniffing your way down a trail, maybe you are ready to try an "onion walk." Using a regular onion that is cut in half, rub it on a surface that is safe to approach with your nose. For instance, avoid poison ivy or trees with thorns. Your trail could be in a park or in your own backyard. After your scent markings are done, go for a walk with your children or friends, and see if they can follow your onion trail. If they are successful, congratulate them on following their noses. ▲

## Lorrie's Birthday

In 1996 we established a Seeds for Education fundraising initiative in honor of Lorrie Otto's birthday. Her birthday is in September, and she will be 91 years old.

Please send your gifts by September 5th so we can get your cards and letters to her in time for her birthday.

Remind your fellow members and chapter boards to send their contributions to the Seeds for Education Grant Program, in Lorrie's honor. Also you can go to [for-wild.org/download/bd/lorriebirthday.html](http://for-wild.org/download/bd/lorriebirthday.html) to contribute and to download a special birthday card. ▲

## FOREVER WILD

### Congratulations to Our Newest Lifetime Members

#### Rodman E. Doll

Ann Arbor (MI) Chapter

#### Sybilla S. & Peter Prest

Columbus (OH) Chapter

#### Robert & Joan Schaupp

Door County (WI) Chapter

#### Mariette & Dave Nowak

Milwaukee-Southwest/Wehr (WI) Chapter

#### Michelle Vanstrom

Niagara Falls and River Region (NY) Chapter

#### Mary & John Thiesing

Rock River Valley (IL) Chapter

*Thank you for your support and your dedication to Wild Ones.*

★★★★★★★

### You Can Be a Lifetime Member

The Wild Ones National Board is pleased to be able to offer this special way to show your support of Wild Ones and its mission.

\$1,200 per household, payable over three years. Not inheritable.

Applies to household, which includes children under 18 years of age.

Local chapters will still receive their annual dues reimbursement for lifetime members. One address per membership.

**Contact the National Office, toll-free at 877-3944-9453 for details.**



# Japanese Knotweed: Godzilla of the Plant World

By Janet Allen

## INVASIVES ON THE HORIZON

My husband has an enemy – a persistent, aggressive one, taller than he is – up to 10 feet or more. After battling this foe on our church grounds an entire summer, he believes he may be conquering it, albeit slowly. That enemy is Japanese knotweed (*Polygonum cuspidatum*) – sometimes *Fallopia japonica* or *Reynoutria japonica* – also known as fleeceflower, crimson beauty, Mexican bamboo, or Reynoutria. Those who know it most intimately call it “killer bamboo.”

Japanese knotweed was introduced from Eastern Asia to the United Kingdom as an ornamental plant in the early 1800s, and from there to the United States in the late 1800s. Despite its “bamboo” characterization, it’s actually a member of the buckwheat family. This upright, shrub-like perennial has smooth stems, swollen at joints where the leaf meets the stem. Its large leaves are somewhat heart-shaped. Its sprays of tiny greenish-white flowers in summer are followed by small winged fruits with lots of tiny seeds.

Japanese knotweed has invaded disturbed areas of the eastern U.S., some mid-west and western states, and even Alaska. It tolerates a wide variety of conditions, including full shade, high temperatures, and high salinity. Although it tolerates drought, it’s often found near water sources.

It spreads primarily by rhizomes, but it can also spread by water- or wind-borne seeds. It can even sprout from discarded cuttings. It spreads quickly, and crowds out native vegetation, even more aggressively than most invasives. It’s extremely persistent. It’s tough, even having been known to push up through pavement or disrupt house foundations. It greatly alters native ecosystems.

Knowing what a nasty plant this is, imagine our horror when members of our chapter saw it featured in a habitat garden tour in a neighboring city. A professional landscaper had actually installed this monster – and some garden center had actually



Infestation of Japanese knotweed (*Fallopia japonica*). Photo: Tom Heutte, USDA Forest Service, Bugwood.org.

sold it. (I myself have seen it for sale.) Any of the native alternatives (see sidebar) would have been at least as beautiful in that landscape.

The USDA’s National Invasive Species Information Center offers an online video<sup>1</sup> if you want to see it “live.” (Oddly, the video features Gabriel Fauré’s lovely *Pavane* as background music – Paul Dukas’ *Sorcerer’s Apprentice* would have been more appropriate.)

### Eradicating knotweed

There are many ways to attempt to eradicate knotweed. I’ll list a few methods, but if you’re preparing for battle this year, it would be wise to further explore the details as you plan your attack. You probably will need to use more than one of these methods, and definitely over a long period of time. As one commentator put it, “Prepare to make its eradication your new hobby.” And remember, cuttings can regenerate, potentially spreading the problem beyond your yard. So regardless of the methods you use, thoroughly dry or burn the rhizomes prior to disposal.

You may try smothering a small stand by covering it with a sturdy tarp. This method has the virtue of feeling organic, but you should keep in mind that research suggests that rather than dying, knotweed has the capability of going dormant for up to 20 years and possibly longer.

Another method is to apply glyphosate as a foliar spray in late summer or early fall – or even repeatedly throughout the growing season to slow it down.

A third method is to dig out the rhizomes, trying to get every bit, since it can resprout from even the smallest piece left in the ground. Of course, it’s not likely you’ll get every bit, since the rhizomes of an established stand can spread 12 to 15 feet and 6- to 9-feet deep. CONTINUED ON PAGE 19

### NATIVE ALTERNATIVES

New England Aster (*Aster novae-angliae*)  
Blue False Indigo (*Baptisia australis*)  
Sweet pepperbush (*Clethra alnifolia*)  
Silky dogwood (*Cornus amomum*)  
Sweet Joe-Pye-Weed (*Eupatorium purpureum*)  
Queen-of-the-Prairie (*Filipendula rubra*)  
Virginia sweetspire (*Itea virginica*)  
Maleberry (*Lyonia ligustrina*)  
Fragrant sumac (*Rhus aromatica*)

# Seeds for Education Grants for 2010

## Link Children to Natural Landscapes

By Mark Charles, Seeds for Education Director

Since 1995, Wild Ones members and chapters have supported projects across the United States that feature hands-on learning experiences for children and youth. Winning projects focus on native plants and natural landscapes in a variety of forms, from outdoor classrooms and nature trails to prairie restorations and woodland gardens.

This year's awards again feature projects that involve children and youth in planning, installing, and maintaining their projects in ways appropriate to their age and grade level. Most popular this year are natural landscapes that support a diverse web of life. Many include plants that support butterflies or provide food and habitat for songbirds. When children handle native plants, see their flow-

ers, or plant seeds, they learn about ecology in a way that no book or video can equal.

Through the Lorrie Otto Seeds for Education (SFE) grant program, your donations have totaled over \$34,000 in the past 10 years. We have supported 144 awards to schools, nature centers, and other public places of learning across the country, for projects involving young people and native plants.

This year we funded 19 projects out of 49 applications. See the list of our 2010 Seeds for Education grant recipients on the next page.

For a listing of previous SFE grant recipients go to [www.for-wild.org/seedmony.html](http://www.for-wild.org/seedmony.html).



### SFE Nursery Partners

Each year, nursery partners supply seeds, plants, discounts, and of course, advice to grant recipients in their areas. We thank them for their support.

#### Arizona

##### Flagstaff Native Plant and Seed

400 E Butler Ave Flagstaff AZ  
(928) 773-9406  
[info@nativeplantandseed.com](mailto:info@nativeplantandseed.com)  
[www.nativeplantandseed.com](http://www.nativeplantandseed.com)

#### California

##### Yamagami's Nursery

1491S DeAnza Blvd Cupertino CA  
(408) 252-3347  
[poka@yamagamisnursery.com](mailto:poka@yamagamisnursery.com)  
[www.yamagamisnursery.com/](http://www.yamagamisnursery.com/)

##### Summer Winds Nursery

1361 S DeAnza Blvd Cupertino CA  
(408) 996-8355  
[kgrizzle@summerwindsgc.com](mailto:kgrizzle@summerwindsgc.com)  
[www.summerwindsgc.com/ca/index.htm](http://www.summerwindsgc.com/ca/index.htm)

##### Yerba Buena Nursery

19500 Skyline Blvd Woodside CA  
(650) 851-1668  
[www.yerbabuenanursery.com](http://www.yerbabuenanursery.com)

##### Rancho Santa Ana Botanic Garden

1500 N College Avenue  
Claremont CA (909) 625-8767  
[jett@rsabg.org](mailto:jett@rsabg.org) [www.rsabg.org/](http://www.rsabg.org/)

##### Theodore Payne Foundation

10459 Tuxford St Sun Valley CA  
(818) 768-1802  
[Info@theodorepayne.org](mailto:Info@theodorepayne.org)  
[www.theodorepayne.org](http://www.theodorepayne.org)

#### Hawaii

##### Hui Ku Maoli Oia

46-403 Ha'iku Rd in Kaneohe  
on Oahu  
Kaneohe HI (808) 295-9335  
[papaku66@gmail.com](mailto:papaku66@gmail.com)

#### Illinois

##### The Natural Garden Inc

38W443 Hwy 64 St Charles IL  
(630) 584-0150 ext 231  
[swysock@thenaturalgardeninc.com](mailto:swysock@thenaturalgardeninc.com)  
[www.thenaturalgardeninc.com](http://www.thenaturalgardeninc.com)

##### Blazing Star Inc

2107 Edgewood Dr Woodstock IL  
(815) 338-4716  
[cwenzel@blazing-star.com](mailto:cwenzel@blazing-star.com)  
[www.blazing-star.com](http://www.blazing-star.com)

#### Kentucky

##### Shooting Star Nursery

160 Soards Rd Georgetown KY  
(502) 867-7979  
[shootingstarnursery@msn.com](mailto:shootingstarnursery@msn.com)  
[www.shootingstarnursery.com](http://www.shootingstarnursery.com)

#### Maine

##### Western Maine Nurseries

4 Nursery Lane Fryeburg ME  
(800) 447-4745  
[info@wmnurseries.com](mailto:info@wmnurseries.com)  
[www.wmnurseries.com](http://www.wmnurseries.com)

#### Michigan

##### Designs By Nature LLC

9874 Chadwick Laingsburg MI  
(517) 651-6502  
[designsbynature@hotmail.com](mailto:designsbynature@hotmail.com)

#### Montana

##### Blackfoot Native Plants

PO Box 761 Bonner MT  
(406) 244-5800  
[plants@blackfootnativeplants.com](mailto:plants@blackfootnativeplants.com)  
[blackfootnativeplants.com/](http://blackfootnativeplants.com/)

#### North Carolina

##### Indiantown Farms

315 Indiantown Road Shawboro NC  
(252) 202-5834  
[forbel@embarqmail.com](mailto:forbel@embarqmail.com)

##### North Carolina Botanical Garden

The University of North Carolina  
CB 3375  
Chapel Hill NC (919) 962-0522  
[ncbg@unc.edu](mailto:ncbg@unc.edu) [www.ncbg.unc.edu](http://www.ncbg.unc.edu)

#### Niche Gardens

1111 Dawson Rd Chapel Hill NC  
(919) 967-0078  
[Mail@nichegardens.com](mailto:Mail@nichegardens.com)  
[www.nichegardens.com](http://www.nichegardens.com)

#### Hoffman Nursery

5520 Bahama Rd Rougemont NC  
(800) 203-8590  
[info@hoffmannnursery.com](mailto:info@hoffmannnursery.com)  
[www.hoffmannnursery.com](http://www.hoffmannnursery.com)

#### New York

##### St Lawrence Nurseries

325 State Hwy 345  
Potsdam-Madrid Rd Potsdam NY  
(315) 265-6739  
[trees@sln.potsdam.ny.us](mailto:trees@sln.potsdam.ny.us)  
[www.sln.potsdam.ny.us](http://www.sln.potsdam.ny.us)

#### Oregon

##### Heritage Seedlings Inc

4194 71st Ave SE Salem OR  
(503) 585-9835  
[sales@heritageseedlings.com](mailto:sales@heritageseedlings.com)  
[www.heritageseedlings.com](http://www.heritageseedlings.com)

##### Doak Creek Nursery

83331 Jackson Marlow Rd  
Eugene OR (541) 484-9206  
[www.doakcreeknursery.com](http://www.doakcreeknursery.com)

##### Karma's Forest Wholesale

Nursery & Organic Gardens  
23223 Hwy 36 Cheshire OR  
(541) 998-2436  
[karmasforest@yahoo.com](mailto:karmasforest@yahoo.com)

#### Pennsylvania

##### Ernst Conservation Seeds

9006 Mercer Pike Meadville PA  
(800) 873-3321  
[ernstsales@ernstseed.com](mailto:ernstsales@ernstseed.com)  
[www.ernstseed.com](http://www.ernstseed.com)

##### Edge of the Woods Native Plant Nursery LLC

2415 Route 100 Orefield PA  
(610) 395-2570  
[stantsits@edgeofthewoodsnursery.com](mailto:stantsits@edgeofthewoodsnursery.com)  
[www.edgeofthewoodsnursery.com](http://www.edgeofthewoodsnursery.com)

#### Yellow Springs Farm

1165 Yellow Springs Rd  
Chester Springs PA  
(610) 827-2014  
[catherine@yellowspringsfarm.com](mailto:catherine@yellowspringsfarm.com)  
[www.yellowspringsfarmsfarm.com](http://www.yellowspringsfarmsfarm.com)

#### Tennessee

##### Nashville Natives

7443 Liberty Road Fairview TN  
(615) 799-8719  
[nashvillenatives@bellsouth.net](mailto:nashvillenatives@bellsouth.net)  
[www.nashvillenatives.com](http://www.nashvillenatives.com)

#### Virginia

##### Sassafras Farm

7029 Bray Rd Hayes VA  
(804) 642-0293  
[sassafrasfarm@verizon.net](mailto:sassafrasfarm@verizon.net)

##### Bennett's Creek Nursery

5635 Shoulders Hill Road  
Suffolk VA (800) 343-4611  
[wayne@bcnursery.com](mailto:wayne@bcnursery.com)  
[www.bcnursery.com](http://www.bcnursery.com)

#### Washington

##### Go Natives! Nursery

2112 NW 199th Shoreline WA  
(206) 542-1275  
[gonatives@gmail.com](mailto:gonatives@gmail.com)  
[www.gonatives.com](http://www.gonatives.com)

#### Wisconsin

##### Prairie Nursery Inc

W5875 Dyke Ave  
PO Box 306, Dept WO  
Westfield WI  
(800) 476-9453 ext 231  
[kirks@prairienursery.com](mailto:kirks@prairienursery.com)

##### Stone Silo Prairie Gardens LLP

4500 Oak Ridge Cir De Pere WI  
(920) 336-1662  
[info@stonesiloprairiegardens.com](mailto:info@stonesiloprairiegardens.com)  
[www.stonesiloprairiegardens.com](http://www.stonesiloprairiegardens.com)



## 2010 Seeds for Education Grant Recipients

**Elizabeth Learning Center CA \$300** Elizabeth Learning Center will be converting the flagpole area on their campus into a California-native-plant habitat and botanic garden using desert plants. *Partner at Large*

**Franklin Middle School WI \$300** Will be enriching with legumes, a native Wisconsin prairie garden, started in 2009. *Green Bay Chapter*

**Clintonville High School WI \$300** The East Prairie Biodiversity Enhancement project involves students planting and monitoring prairie plants at the prairie restoration on campus at Clintonville High School. The plants purchased through this grant will supplement the existing seed bank of the new prairie established in 2008. *Wolf River Chapter*

**Westgate Elementary – Edmonds School District WA \$300** At the Michele Boyd Schoolyard Habitat Restoration Project, students are learning about the critical elements of a healthy ecosystem by gathering data and researching wildlife in a local park and comparing it to the schoolyard habitat. They are creating an outdoor classroom with their very own "dream habitat" that includes food, water, shelter, and places for wildlife to raise young using prairie and shade plants. *Partner at Large*

**The Farm School TN \$300** The Farm School Garden Project is part of the 5 Kingdoms Park and Meadows. The Farm School Garden Project has been designed with the intention of transforming their available outdoor space into beautiful, functional, and educational areas that can be enjoyed by the students and teachers alike. The native gardens using prairie and shade plants are a key component of this project, which also includes vegetable gardens, a living lab, cob structures, and eventually a forest garden. *Partner at Large*

**Clark Fork School MT \$300** The Native Garden Education Area at the Clark Fork School will create a native-plants garden as an outdoor classroom and quiet observation space for use by students, faculty, and parent body as a place to learn, explore, experiment, and to gain inspiration for nature, science, and art studies. The school's environmental and educational mission will be met and showcased through the restoration and replanting of this previously disturbed area through the use of prairie, tree, and shrub species. *Partner at Large*

**Wiley Elementary PTA NC \$300** This ecological restoration will focus on Piedmont savannah, and be based on the Earth Partnership for Schools model (UW-Madison Arboretum Initiative). This partnership focuses on the use of native-habitat areas that allow for formal curriculum integration and unscripted interactions with nature for students and local community. *Partner at Large*

**Crow Middle/High School OR \$300** Crow Middle/High School goes native as students convert older school landscaping to native plants, and educate the community regarding benefits through brochure, web site, and demonstrations using shade understory plants and trees and shrubs. *Partner at Large*

**Shelby County Parks and Recreation KY \$150** The purpose of this project is to provide native trees and shrubs as educational landscaping around a future nature center to be located at the Red Orchard Park. *Louisville Metro Chapter*

**Walton Elementary School ME \$150** Students, teachers and community members will come together to plant trees, shrubs, and native flowers to preserve the integrity of the natural Maine landscape in an area adjacent to the school playground, using trees, shrubs, and understory plants. *Partner at Large*

**Kaneland McDole Elementary IL \$150** Creation of an on-site outdoor prairie classroom with curricular connections to include all grade levels. For example, 4th grade regions/prairie, 1st grade insects, and 5th grade outdoor education and observation units. Creation of this space will reduce the need for field trips, enhance environmental literacy, apply classroom learning to a real-world environment, and allow opportunities for increased community involvement. *Northern Kane County Chapter*

**Papahana Kuaola HI \$150** Bringing back the natives, this 140-foot x 160-foot area of land will be planted with ethnobotanical and native plants by 5th grade students, creating a native garden. This hands-on activity will complement classroom learning about native Hawaiian plants and animals currently provided by Papahana Kuaola. *Partner at Large*



**Shawboro Elementary NC \$150** Shawboro Elementary Outdoor Classroom Habitat will be an outdoor classroom where students can be involved in authentic hands-on learning that can impact their way of thinking about the world. Students will learn conservation by using water barrels, creating compost, and stewardship through caring for the plants and the wildlife that the area will attract. Through experiments, investigations and observations, students will learn science concepts of weather, soil, plant and animal interdependence, as well as the core subjects of math, social studies, and language arts through integrated projects. *Partner at Large*

**Plainfield North High School IL \$150** Developing a native prairie at Plainfield North High School by renovating a large lawn area with native Illinois prairie plants will turn an area of their school campus into an attractive and functional outdoor classroom. *Greater DuPage Chapter*

**Discovery Charter School CA \$150** This Discovery Charter School educational, environmental, and beautification project is designed to provide habitat for butterflies and hummingbirds, and assist students and parents with identifying some of the California native plants that grow in the Santa Clara Valley area. *Partner at Large*

**Kimberton Waldorf School PA \$150** Kimberton Waldorf School will be installing a rain garden comprised of native prairie pollinator-friendly plants on the campus in order to enhance native, pollinator, and honeybee habitat, and reduce non-point source pollution flowing into the French Creek – a waterway of exceptional value (which is immediately adjacent to the school campus). *Habitat Resource Network of Southeast Pennsylvania Chapter*

**Flagstaff Arts and Leadership Academy AZ \$150** Flagstaff Arts and Leadership Academy uses the neighboring Colton Community Youth Garden as a hands-on experimental classroom to learn about the Colorado Plateau and sustainable agriculture. Land at the site has been set aside to develop a native pollinator garden using native plants. They plan to incorporate a pond, shade structures, and benches – along with prairie plants and trees and shrubs. *Partner at Large*

**Vera Ralya Elementary School MI \$150** A Michigan prairie ecosystem (10 feet x 20 feet) will be established with native grasses (60 percent of total plants at 1-foot spacing) and wildflowers in the existing Courtyard Outdoor Classroom to augment the Ralya Elementary science curriculum. *Red Cedar Chapter*

**Westwood Elementary WI \$150** The Westwood Ecosystem Education program plans to start development of a variety of ecosystems as an outdoor classroom. Their 2009-2010 school year goal is to start the first phase with a butterfly garden using prairie plants. *Green Bay Chapter*

## How To Help

**You Can Help These Projects Succeed** Chapters and Partners-At-Large can help these projects in many ways. Project leaders welcome assistance with planning, logistics, and site preparation. Help with summer maintenance is often required to help plants get established. Your efforts can make a difference in the lives of young people. To see a list of all SFE applicants over the years, go to [www.for-wild.org/seedpast.html](http://www.for-wild.org/seedpast.html).

**Volunteer Judges** Our thanks to the volunteer judges for time and care reviewing the applications. This year 34 botanists and educators rated the applications and wrote detailed comments. These comments help every project.

# Add some spice bush to your landscape

By Edna Greig

Spicebush (*Lindera benzoin*) is a common deciduous shrub native to the woodlands of eastern North America. It is the earliest blooming native woodland shrub, with its flowers opening by early to mid April across most of its range. Although the greenish-yellow, lightly fragrant flowers are quite small, only about 1/8-inch wide, they are arranged in dense clusters along the twigs. When a clump of blooming spicebush is illuminated by slivers of sunshine that pass through the still leafless tree canopy, they can appear to glow bright yellow. For this reason, spicebush is sometimes called the "forsythia of the woods." But spicebush has a refined beauty and value for wildlife that the cultivated non-native forsythia cannot match.

Spicebush is a member of the laurel family – not to be confused with mountain laurel, (*Kalmia latifolia*) – which is a member of the heath family. It is usually found in the wet parts of the woods, often along streams. It has a multi-branching pattern, and usually grows to a height of about 5 to 15 feet. Its leaves, which open after the flowers bloom, are alternate, entire, egg-shaped or oval, and about 2 to 6 inches long. The leaves are bright green above, and paler beneath. The leaves and slender greenish-brown twigs are spicy-fragrant when crushed, hence the common name of the shrub.

The tiny flowers do not have petals, but have a six-parted calyx (the outermost whorl of a flower). Spicebush is dioecious, meaning that each individual shrub bears either only male or only female flowers. Because the flowers are so small, a hand lens may be needed to determine the sex of an individual shrub. The female (pistillate) flower is distinguished by a single globular ovary in its center. The male (staminate) flower has nine stamens that extend a little bit beyond the calyx lobes. Under similar environmental conditions, male shrubs will bear more flowers than females. This is because it requires a lot more of the shrub's energy to develop the female flowers into fruits and seeds.

The spicebush fruit is a bright red, ovoid drupe (a fleshy fruit with a hard inner coat surrounding a single seed). When crushed, the fruits emit a strong peppery-piney fragrance, and give rise to another of the shrub's common names,

wild allspice. The fruits usually mature over a period of a few weeks in August and September, hidden among the leaves.

Spicebush leaves turn an attractive golden yellow in the autumn.

## Value for Wildlife

Spicebush provides an important early-season source of nectar to small flies and bees, when little else is in bloom. In return, the insects provide the important service of transferring pollen from male shrubs to female shrubs.

Spicebush also is an important larval food plant for native butterflies and moths. The larvae of the beautiful spicebush swallowtail butterfly (*Papilio troilus*) generally feed on either spicebush or sassafras (*Sassafras albidum*), another member of the laurel family. The spicebush silk moth (*Callosamia promethea*) – another common name is promethea moth – is a large, showy moth whose larvae often feed on spicebush. The large, voracious larvae of this moth feed in broods, and can strip many leaves from a spicebush shrub in a few late summer days. But the shrub suffers little long-term damage from this assault, and the show is fascinating to watch.

The fruits of spicebush are a favorite food for birds, and by the time it loses its leaves in October, it has few fruits remaining on its twigs.

## Landscape Use

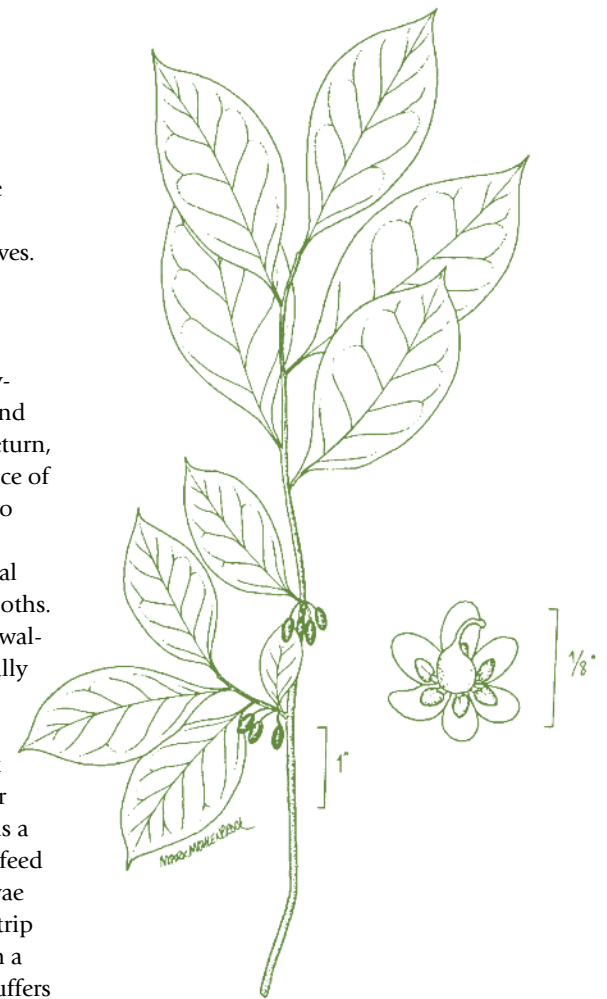
Spicebush is a tough shrub that can add multi-season interest and wildlife attraction to the home landscape. It is suitable for use in a large border, a foundation planting, or naturalized in a woodland planting.

Although it grows mostly in damp areas in its native habitat, spicebush is much more adaptable in the garden. It can be grown successfully in average to even dry soil, especially if it is protected from intense mid-day sun. It can grow in shade, but will look and flower best if it gets at least partial sun. It is not particular about soil pH.

Spicebush is not susceptible to any serious damage from insects or disease. It usually is not browsed by deer.

## Propagation

There are not many commercial sources for spicebush plants, and it is difficult to propagate from cuttings. The best propagation method is by seed, which is relatively easy and reliable. It is best to collect a few



Spice bush (*Lindera benzoin*). Drawing: USDA-NRCS PLANTS database/USDA NRCS.

fruits as soon as they mature in August or September, before the birds get to them. The fleshy part of the fruit should be removed. The seeds then need to be exposed to cold, damp conditions for a period of about three months. This can be achieved by simply planting the seeds outdoors in the fall. They can be planted directly into the ground or in a pot that is covered with netting to keep out burrowing animals. The seeds should germinate the following spring.

Alternatively, the seeds can be placed in the refrigerator, in a plastic bag along with some moist vermiculite, for three months. After this cold treatment, plant the seeds in a pot and, place it either in a greenhouse, indoors under grow lights, or outdoors after the weather warms. The seeds should germinate within a couple of weeks. The seedlings grow quickly, and are best planted in their permanent location before late autumn of their first year. Water well until the plants are established. They should flower the third spring after sowing the seeds. Once the plants are established, they need little attention. ▲



# Protecting the little things: The Xerces Society for Invertebrate Conservation

By Jennifer Hopwood

Invertebrates: Without them, there would be no apples, no sunflower seeds, no shrimp cocktail, no coral reefs, and few flowering plants. Fish, birds, amphibians, reptiles, and mammals would all have much less to eat. Dead plant and animal matter, along with dung, would mar the Earth's surface and waterways. Our human lives and the lives of invertebrates, those animals without backbones, are inextricably intertwined, so much so that we must not forget what we would lose if they were not around.

Though often overlooked, invertebrates are at the center of healthy ecosystems everywhere. Biologist E. O. Wilson calls them the "little things that run the world." As pollinators they pollinate many flowering species, including many agricultural crops we rely on for food. Seeds and nuts, also products of pollination, are food for birds and mammals. Invertebrates may be eaten directly by us and by other animals, and are a part of nearly every food web. Decomposers, like worms, dung beetles and carrion flies break down waste and recycle the nutrients. The work of these millions of insects, spiders, worms, crabs, starfish, and other invertebrates is amazing, and essential.

Invertebrates live everywhere we live, and in some places that we cannot. By some estimates, invertebrates make up 82 percent of the identified species of animals. For every human on the planet at this moment, there are nearly 2 billion insects. Though invertebrates are extremely abundant and diverse, this does not mean that they are immune to destruction. Human activities can impact invertebrates negatively. Though we notice more quickly when a colorful wildflower disappears after the conversion of its forest habitat into a cultivated field, the smaller invertebrates likely also disappeared, unnoticed.

The Xerces Society for Invertebrate Conservation was established with the goal of preventing extinction of invertebrates. The Xerces Society is a member-supported non-profit organization dedicated to the conservation of invertebrates and their habitat. The society was formed in 1971 by Robert Michael Pyle, and the name of the group serves as a reminder of its goal: It is named after the xerces blue (*Glaucopsyche xerces*),

the first butterfly in the United States known to have become extinct due to the loss of habitat. (*Editor's Note: Robert Michael Pyle was our keynote speaker for the Wild Ones 25th Anniversary Celebration, in Madison.*)

Xerces works with scientists and citizens alike to implement conservation and educational programs. Xerces has several core programs: Endangered species, pollinator conservation, and aquatic invertebrates as related to watershed health. Each of these programs focuses on the protection and management of habitat for biodiversity, goals which Wild Ones also shares.

Xerces approaches invertebrate conservation in several ways. We work to shape policy while providing guidance to the general public, and direct technical support to land owners and land managers. For example, recently Xerces, along with several other groups and scientists, submitted a petition to the USDA to prohibit shipping commercially reared bumblebees outside their native range, and to certify health of these factory-reared bumblebees.

Meanwhile, the Native Pollinator Conservation Program trains agency officials, park managers, farmers, and others, to protect, restore, and enhance areas for pollinators and other beneficial insects. These restoration and enhancement activities often involve seeding native plants into many sites.

As part of its outreach efforts, The Xerces Society has many resources available online. The recently developed Pollinator Conservation Resource Center, [www.xerces.org/pollinator-resource-center](http://www.xerces.org/pollinator-resource-center), is organized by region, and provides access to plant lists, pesticide-protection guides, information about bee nest sites, and guidance for implementing pollinator-habitat projects.

Native plants play a huge role in Xerces' conservation programs. Just as invertebrates are crucial to native plants, native plants are crucial to invertebrates. Working together, Wild Ones and The Xerces Society can promote both the little and larger organisms needed for healthy ecosystems. ▲



(414) 793-3652  
Fax: (414) 358-3004  
[lancewing@nase.org](mailto:lancewing@nase.org)

Home based in northwest  
Milwaukee

## LaceWing Gardening, Consulting & Design Services

Remember, Life Begins in the Garden –  
Creating Habitats for 9 Years

Naturalized & Habitat Gardens that  
Attract Butterflies, Hummingbirds,  
Beneficial Insects & Pollinators;  
Create a Whole Ecosystem

Garden Consultation, Construction,  
Designs

Habitat Gardens • Prairies • Raingardens  
Woodland Gardens • Shade Gardens  
Stream, River & Lakeside Habitats & Restorations  
Ponds & Water Gardens • Organic  
Maintenance • Pest & Disease Controls

### Winter Services

(Nov. - April)

Landscape habitat designs  
Garden talks

## Landmark Landscape

W3923 County Road O  
Sheboygan Falls WI 53085  
(920) 467-6442

[www.landmarklandscapesinc.com](http://www.landmarklandscapesinc.com)

- Design  
- Maintenance  
- Installation  
- Consulting

Promoting sustainable  
landscape practices and  
ecological design for  
the preservation of our  
earth and her  
inhabitants



## Wild Columbine

### Beyond the bird feeder: Gardening for Birds and Other Wildlife

By Mariette Nowak

North America is blessed with a great variety of native columbine species, especially in the West and Southeast. This is the result of co-evolution with their pollinators (*see below*), as well as hybridization, which occurs readily in columbines.

Hybrids result when pollinating birds or insects nectar at several species in turn, thus combining the genes of these species. If these hybrids then become isolated in a specific location, they often develop unique characteristics, resulting in a new local species. Today, many columbine names reflect these localities, such as Rocky Mountain blue columbine, oil shale columbine, desert columbine, Chiracahua columbine, Utah columbine, and Laramie columbine.

#### Coevolution with Birds and Insects

The evolution of the various species of columbine in response to potential pollinators is complex and fascinating. Recent studies show that the genus *Aquilegia* originated in Eastern Europe and Central Asia, probably crossing the Bering Strait land bridge during the last Ice Age. DNA analysis indicates that it is likely the “founder flower” for all the columbine species found today on our continent. Many new species of columbine evolved in their new habitat, in a classic case of adaptive radiation, much like Darwin’s finches did in the Galapagos.

Those colored blue like the Old World species are pollinated by bees, just as are the species in Europe and Asia. The blue columbines are only found in northern latitudes, or high altitudes, where other pollinators are not found.

Other species of columbine evolved in special ways in response to new pollinators available at lower elevations and latitudes in North America. Some columbine species grew longer spurs, increased their nectar, and became lighter in color to attract long-tongued hawk moths, which prefer warmer locations than do bees. These changes ensured a better chance of pollination for the flowers. In the Southwest, red-colored columbines evolved to attract the abundant hummingbirds found there. These red columbines produced even more



The beautiful red Canada columbine (*Aquilegia canadensis*) is the only native columbine found throughout the eastern half of the U.S. and Canada.

nectar to suit the high-energy needs of hummingbirds.

Gradually the red columbines further evolved to produce different spurs and floral shapes to adapt to the needs of particular species of hummingbirds. Bumblebees also began pollinating these red columbines, which enabled the red species to move north of the range of the hummingbirds that pollinated them.

#### Value for Birds and Insects

The primary value of the wild columbine for hummingbirds is the nectar found in the flower’s spurs. Red-colored columbines have especially rich nectar – twice the sugar content of the other columbines native to North America, along with important amino acids. Ornithologists have found that the ruby-throated hummingbird tends to follow the blossoming of the Canada columbine (*Aquilegia canadensis*) on its journey north in spring, since the flowers are the first to provide nectar for the birds. Later in the season, columbine seeds provide food for finches and buntings.

Bees, butterflies, and hawk moths also feed on columbine nectar. In addition, some species of caterpillars feed on the foliage. Columbine leaves are the sole food for the caterpillars of a skipper, the columbine duskywing (*Erynnis lucilius*). While these caterpillars may defoliate the plant, they never feed on the flowers, and the plants survive into the next season.

The columbine leaf miner (*Phytomyza* sp.) also feeds only on columbines. Its tiny trails, created as the insect chews in the interior of the leaves, are frequently seen on columbine foliage.

#### Landscape Notes

With their beautiful blossoms and attractive foliage, columbines are a wonderful addition to wildflower- and rock gardens, wood-

lands, and borders. Most are short-lived, but readily self-sow and persist in the right conditions. Normally, they grow in places with moist soils in spring, followed by dry summers. Over-watering in summer can cause crown rot.

Since they die back after flowering with only a few basal leaves persisting, it is best to plant with other wildflowers or native grasses in the garden.

Among the many columbine species, a few stand out as excellent choices for gardeners.

The lovely red Canada columbine (*Aquilegia canadensis*) is the only native species found throughout the eastern half of the United States and southern Canada. It is adaptable to a number of habitats including woodlands, savannas, and fens – usually preferring a somewhat shady location. This columbine is endangered in Florida, but can be grown as far south as Orlando.

The Colorado blue columbine (*Aquilegia caerulea*) is found throughout the Rockies, from the foothills to alpine meadows, and is the state flower of Colorado. It has very showy bi-colored blossoms (typically blue and white), and has been called the “queen of columbines.” Not surprisingly, it is one of the most popular western species, and is commonly cultivated.

The red or Sitka columbine (*Aquilegia formosa*), native to northwestern North America from Wyoming and Alberta to British Columbia, and along the Pacific coast from Alaska to California, is another adaptable species for native-plant gardens.

There are also many beautiful yellow, white, and pink columbines in the western United States, which are sometimes grown in wildflower gardens. ▲



## Make a Date

What is it?

**The Wild Ones 4th Quarter  
Annual Meeting and the  
2010 Annual Membership  
Meeting and Conference**

When is it?

**November 5th & 6th**

Where is it?

**Connecticut College,  
New London, Connecticut**

Who's the host?

**Mountain Laurel Chapter (CT)  
of Wild Ones**

What will we do?

**Have fun. Meet friends, new and  
old. Learn about native plants  
and natural landscaping.**

What else?

**Exhibitors, book sales,  
and more.**

Anything else?

**Our annual photo contest.  
Start working on your photos.**

More details coming soon.



## Growing Wild Ones: Strategy Planning Notes

By Steve Windsor

Our organization, Wild Ones, is interested in growing our membership and promoting the use of native plants in our landscapes. To further this effort, at our fourth quarter meeting this past fall, the National Board adopted a new vision statement ([www.for-wild.org/aboutsit.html](http://www.for-wild.org/aboutsit.html)). The following day we held a strategy-planning session that was open to all members. We brainstormed over a dozen opportunities that could help us achieve our newly adopted vision statement, and identified the barriers we face as well.

Many great ideas were offered. One suggestion was that, considering our many members, we should be able to uncover many talents – and that we should inventory these.

Additionally, our plants have many talents themselves that we can work with to grow our group. For example, the idea that “native plants are nature’s bird feeder” was applauded as a promotional angle. Along with birds, we should promote their ability to attract and feed bees, butterflies, and other less-charismatic arthropods. Encouraging use of native shrubs for hedges was another great idea.

Basically, we recognized that we need to get the word out more prominently, via both traditional approaches, as well as modern social media like Facebook and Twitter. The idea of partnering with like-minded organizations was also brought up. More partnerships within

our communities and park districts should be sought. Here we can help most by being a source of information. It was also mentioned that the national WILD Center can serve as an important educational resource.

Some thought we should promote a consortium of native-plant growers to make some headway against the commercial horticulture industry. Another idea was that, as a source of ideas and encouragement to people who are new to landscaping with native plants and creating less traditional landscapes, we should put more emphasis on sharing stories from our members.

Some stumbling blocks were mentioned – scarcity of native plant growers/vendors and public perceptions of native landscaping. We were able to show strength as an organization by making some introspective points and discussing whether the Wild Ones name might be a disadvantage to our public face.

Others questioned whether we focus too much on prairie plants as opposed to trees, shrubs and wetlands.

It was pointed out that as natural landscapers, we are ahead of our time. This fact, combined with the reawakening of the Green Movement, places us in a position of advantage. We need to move on this.

We have opportunities. And you may have other ideas as well. These and your stories, need to be heard so we can become a stronger organization. ▲

*Share your stories and ideas with  
Steve Windsor at  
[stevewroselle@yahoo.com](mailto:stevewroselle@yahoo.com)*



**Prairie Moon®  
Nursery**

**More than 600  
species of seeds  
and plants  
indigenous to  
North America.**

**[www.prairiemoon.com](http://www.prairiemoon.com)  
(866) 417-8156**

**PRAIRIE • MEADOW • WETLAND •  
SAVANNA • WOODLAND**

*Free full-color catalog and native  
plant growing guide!*

## JOIN WILD ONES. RENEW. UPGRADE. GET A FREE DVD AND/OR FREE BOOK.

To kick off the **Grow Wild Ones Campaign for 2010**, we have updated, revamped, and reproduced the popular **Wild About Wildflowers** video in DVD format. And now, this amazing video is available **free** when you join Wild Ones, or renew your membership at an upgraded level.

Because many of our long-time members have already received this helpful video, we are offering the DVD version free to new members, as an enticement to join Wild Ones. We want to – no, we *need* to – get Wild Ones membership over the 3,000-member hump.

**This great video for all Wild Ones members, new or old**, lets you get dirt on your hands without getting dirty. This video will help anyone to:

*Identify* native wildflowers and grasses. *Design* and prepare the planting site.

*Grow* and nurture wildflowers and grasses. *Plan* for long-term maintenance.

*Enhance* their landscaping to make it a habitat. *Enjoy* year-round beauty in their back yard, neighborhood, and schools or businesses.

### Renewing members get a free book

Members renewing at the Wild level will receive a free copy of our 25th anniversary commemorative 4-color book of wonderful photos and stories, *25 Years of Wild Ones: Native Plants, Natural Landscapes*.

### Upgrading members get both

Renew at the Wilder level, and get the Wild About Wildflower

Renew at the Wildest level, and get the DVD and the 25-year

### Don't wait, do it now

Use the application on page 23, or join online at [www.for-wild.com/joining.html](http://www.for-wild.com/joining.html).

### Make a difference – join Wild Ones

A close-up photograph of a bumblebee with yellow and black stripes, positioned on a vibrant red flower with many small, pointed petals. The background is a soft, out-of-focus green.

## WILD Center Wish List

Volunteers to help with all sorts of things: Indexing the *Wild Ones Journal*  
Cataloging and arranging library materials • Planting demonstration gardens  
Recording bird and critter sightings • Pulling buckthorn  
Restoring woodland understory and overstory.

Stuff: First-aid kit • Rain gauge • Gardening tools (trowels, shovels, pruners, pruning saws, etc.) • Garden tractor or 4-wheeler and small trailer • Stepladder  
Trailer for hauling debris with car • Posts for bluebird houses  
Conference-type tables • Conference-type stackable chairs • One set of bunk beds  
Two dressers • Trees, 6-8-ft. tall, such as maple and oak (bur, white, and swamp white oak) • Woodland plants, such as grasses, ephemerals, ferns, etc.

Contact the National Office if you have other items that may be suitable for use at the WILD Center. We now have someone in the office from 10 a.m. to 3 p.m. Monday-Friday.  
Or just call for an appointment: 877-394-9453.

## Chapter Notes

*This is the time of year many chapters are holding plant sales and other public events. These events, in addition to being major fundraisers for most of our chapters, also provide a public platform for educating the community about the benefits of using native plants in landscaping.*

**Maureen Carberry**, President of **Habitat Resource Network of Southeast Pennsylvania (PA) Chapter** wrote in the State of the Chapter report, "The wholesale group purchase of perennials and woody plants continues to grow every year; some plants are for volunteer projects and many for our members' yards."

**Arrowhead (MN) Chapter** held their first Habitat Here! Festival, which included a plant sale. Chapter President **Carol Andrews** wrote, "Rather than host an indoor conference we held the 'Habitat Here! Festival' at the local nature center in mid-August when the gardens were in full bloom. The festival included tours of the native gardens, kids' activities, tables with information staffed by experts, speakers, and native plants for sale. The event helped recruit a few new chapter members and attracted about 70 people, which is OK for the first year."

**Twin Cities (MN) Chapter** and the **St. Croix Oak Savanna Chapter** co-hosted a Native Plant Expo/Conference. **Marty Rice**, President of the Twin Cities Chapter wrote, "It started out very humbly in 2001 with about 30-plus attendees, which is small for a large metro area. Over 200 are expected at this year's conference. About 50 percent of attendees are non-Wild Ones members, so it gets our name out into the community, and is a good source for new members."

**Gibson Woods (IN) Chapter** grows their own plants for sale. President **Pat Rosenwinkel** wrote, "For the year 2009, members and volunteers donated over 300 hours working in the greenhouse getting ready for our sale...(in) May where 35 workers volunteered."

While **Otter Tail (MN) Chapter** members "grow seedlings, bring in plants, and work the sale..." according to President **Teresa J. Jaskiewicz**.

Other chapters holding native plant sales include **Flint River (MI)**; **Western Reserve (OH)**, **Milwaukee-North, Milwaukee-Southwest Wehr, Menomonee River Area**, and **Fox Valley Area (WI)**, **Greater DuPage** and **Rock River Valley (IL)**. Don't hesitate to contact any of these chapters to find out more about their plant sales. Contact information can be found at [www.for-wild.org/chapters.html](http://www.for-wild.org/chapters.html). ▲



## PHOTO CONTEST



The annual Wild Ones Photo Contest is coming up again, and time is running out to take your best shots and send them in for all to see.

The contest gives Wild Ones members a chance to show off their best native-plant and landscape photos – with an emphasis on showing native plants and natural landscapes, and things related to those environments.

As always, you can view the Photo Contest Rules on our web site ([www.for-wild.org/conference/2010/photo/](http://www.for-wild.org/conference/2010/photo/)), but here are a few important changes you should be aware of:

### No More Prints: All Electronic

All photos must be submitted electronically. This means you should send your entries by e-mail to ([photocontestHQ@for-wild.org](mailto:photocontestHQ@for-wild.org)), put your entries on a CD-ROM and drop off at the WILD Center, or put your entries on a CD-ROM and mail to the address below.

### Tightened Definition of “Native”

Unfortunately, every year, some very nice photos are disqualified because the plants in the photos are not native to the location. So, be sure that the plants in your photos are not only true natives, but

are also native to the location where the photos were taken. A photo of a hybrid or cultivar of a native plant is not acceptable. And if you take a photo of a plant in your yard (or elsewhere) be sure the plant species is native to your state.

### Photo Contest Deadline

- Submissions sent by mail must be received no later than August 3. If delivered to the WILD Center, the deadline is 4 p.m. August 3. No exceptions.

- Entries will be judged on technical merit (composition, focus, exposure, color, etc.) by a highly qualified photographer – and will also be judged for appropriateness to category.

- Categories: Flora. Scenery. Pollinators, Insects or Bugs. Child or Children. Residential Landscaping. Non-Residential Landscaping. Wild Ones Activities. Kid's Photos.

**Full Details:** [www.for-wild.org/conference/2010/photo/](http://www.for-wild.org/conference/2010/photo/).

**Mail CD to:** 2010 Wild Ones Photo Contest, Chan Mahanta, 16770 Old Jamestown Road, Florissant, Missouri 63034.

**E-Mail to:** [photocontestHQ@for-wild.org](mailto:photocontestHQ@for-wild.org).

## Wild Ones Web Site

### Updated Joining Page

With the many options for Wild Ones membership, the “Joining” page had become complicated, but now we’ve simplified it, and hope it will be easier to use. Take a look ([www.for-wild.org/joining.html](http://www.for-wild.org/joining.html)), and let us know if there is anything we can do to further simplify the page.

### WILD Center

We’ve also updated several pages related to the WILD Center, with lots of new photos to show the progress being made at the Center ([www.for-wild.org/eco/center/](http://www.for-wild.org/eco/center/)).

### Invasive Species

June is Invasive Species Awareness Month (ISAM). This is when individuals and groups hold workshops, work parties and field trips to educate others about invasive species in their area, and actions they can take to make a difference. You can find information on invasive plants on our web site ([www.for-wild.org/native.html](http://www.for-wild.org/native.html)). And see our listing of federal and state organizations dealing with invasives ([www.for-wild.org/download/invasive.html](http://www.for-wild.org/download/invasive.html)).

### Store

And finally, we’ve updated the Wild Ones Store. Most notable changes include a few new items and additional sizes for some of the womens clothing. Check it out. ([www.for-wild.org/store/](http://www.for-wild.org/store/)).

## Update on WILD Center

We’re happy to report that

spring has arrived at the WILD Center. Hoping that the deer haven’t done too much damage over the winter, we’re



seeing some green leaves poking through the mulch we put down as weed control in the gardens. Unusual occurrences at the WILD Center include our first dead doe. Removal of this deer from the proposed prairie area near the parking lot falls under “other duties as assigned.” This definitely was not something we had anticipated in our planning. In March we held a rainbarrel seminar at the WILD Center, followed in April by a rainbarrel workshop. It was very well attended by both local community residents and Wild Ones members.

## GROW Wild Ones Campaign

We’ve added 100 members to our roster since the beginning of the GROW Wild Ones Campaign this year – a really great start to our campaign. Thank you all for your hard work. And thank you also for the donations being sent in support of our developing marketing plan. We will recognize everyone at a later date.

## Wildflowers and Native Plants in the Desert

By Margeret Furman (Originally appeared in the *Hesperia Star* – reprinted with permission.)

I hope the late winter arctic blast that arrived after the calendar turned to spring does not upset our display of wildflowers this year. Until then, our wet winter suggested an especially good year for visitors arriving to enjoy our desert blossoms.

*Next summer when the sun dries up the plants, future generations of wildflowers will be scattered naturally by the wind.*

When living down the hill, I was one of those who came to the desert in spring to see the wildflowers. It required some investigation to know when they were blooming. But now that I am a permanent Hesperia resident, I have only to look out the window to see the colorful display. I wanted to help. Last fall, I broadcast native wildflower seeds from the Desert Conservancy in my backyard in expectation of creating a private perfusion of awe.

The flowers I expect to enjoy this year will sprout where I spread the seeds, but next summer when the sun dries up the plants, future generations of wildflowers will be scattered naturally by the wind. That's fine with me.

The seeds will find places to park under other plants, and some might stay home and show off for me again next year. The rest will fall across the desert, bringing color to different places without negatively impacting the ecology. Knowing that these native plants with their shallow roots have been replanted in the wild by the wind lifts or bird drops are what makes them so exciting to discover in natural surroundings. Some are so delicate it takes an up-close encounter to be found.

I look forward to off-road exploration for photo opportunities through the Mojave Preserve and Death Valley. I wish I knew the names of more varieties. I know the purple desert lupine standing tall among other desert plants, white rock daisies, the proud penstemons sprouting in dry stream beds for a solo appearance, and the yellow desert primrose that looks like the annuals for sale at the local nurseries.

I thought it was easy to identify the white sacred datura, the wildflower that

looks so much like petunias. But, datura closely resembles the field bindweed and wild buckwheat weeds, and is so similar to the poisonous jimsonweed – I'm finding my limited knowledge could be dangerous.

Desert flowering shrubs are also an amazing gift. I appreciate the yellow blossoms on the tips of the creosote bushes more when I realize these ancient plants propagate only through their network of interconnecting roots. And, I am thankful for the flowering Joshua trees that have been relocated to places where they have an opportunity to survive after being run out of town by development.

It's attractive when native plants are used in landscaping so we can all enjoy the display of blooms on cacti, ocotillo, desert willows, Apache plumes, desert birds of paradise, and palo verde trees. I followed this scheme when choosing plants for my back yard, and I am getting help. Nature's wind-driven trading plan delivered seeds onto my property from some of the neighboring natural desert brush. The gift of yellow brittle bushes and sages are welcome, and serve to remind us that the desert will reclaim the land if given a chance. I was amazed to find that even 2 feet of snow did not destroy the native plants or break their spines as they bent over from the weight of the winter white blanket.

*Nature's wind-driven trading plan delivered seeds onto my property from some of the neighboring natural desert brush.*

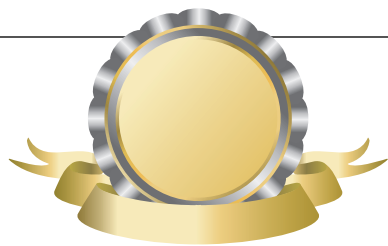
But native plants will have trouble standing up to invasive plants that have been imported. If it is large, round, and tumbles onto your property, it's the rolling seeding mechanism of the Russian thistle weed that has plagued our open spaces since 1873. If it's yellow, and along the highway it has already made the eradication list. "Hold the mustard" is a major effort in San Bernardino County to rid us of the Sahara mustard plant. This mustard is native to the deserts of North Africa and the Middle East, and is especially threatening to the Mojave annuals. Other plants like the fountain grasses are highly aggressive species that will overtake our more delicate plants and contribute to the spread of wildfires.

On the desert, it's a complicated task if we wish to preserve the natural desert look. The most endangered species are our most delicate treasures, the annual wildflowers that are primarily at risk from invasive interlopers. ▲



Joshua trees (*Yucca brevifolia*) in the desert.





## Distinguished Award for Ranger Steve

Steve Mueller of the River City (MI) Chapter was awarded the 2010 Distinguished Professional Interpreter Award by the National Association of Interpretation. This is the highest award they bestow. As Ranger Steve, he has been introducing youngsters (and grown-ups) to northern forest and Great Lakes ecology for most of his life. He has also been a park ranger in other parts of the country.

### CHAPTER ANNIVERSARIES

Celebrating anniversaries during May and June are **Calhoun County (MI) Chapter** and **Southeast Michigan (MI) Chapter** (formerly known as Detroit Metro (MI) Chapter), with 10 years, and **Madison (WI) Chapter** with 15 years. Congratulations to these chapters. Special thanks to you and all your members for all your efforts in supporting Wild Ones.



### Making a difference by design!

- **Focus:** Ecologically and socially sustainable landscape planning & design
- **Program:** Accredited ten-month graduate program for just 19 students at a time, founded in 1972
- **Method:** Practical learning through real projects for real clients, at multiple scales
- **Location:** Wooded hilltop campus in scenic western Massachusetts

Contact: Nancy Braxton, Director of Admissions  
**Conway School of Landscape Design**  
 332 S. Deerfield Road | PO Box 179  
 Conway, MA 01341, 413-369-4044 x5  
[www.csld.edu](http://www.csld.edu)



*native seed mixes*

*Michigan genotype  
native grass seed*

*creating & restoring  
natural landscapes*

*managing land  
for biodiversity*

17080 Hoshel Road  
 Three Rivers, MI 49093  
 269-580-4765  
[www.nativeconnections.net](http://www.nativeconnections.net)

The Natural Garden, Inc.

*The Nursery  
Specializing  
in Native &  
Ornamental  
Perennials  
& Grasses  
Since 1953*



#### Natives

- Plants & Seeds
- Over 250 Species Representing Local/Regional Ecotypes

#### Perennials

- Familiar & Unusual

#### Herbs

- Extensive Collection

#### Experienced Sales Team

Four Acre Garden Center with Display Beds

*Handgrown with care  
for a better environment.*

Your **Best Source** for a  
Diverse Selection of  
Northern Illinois Natives

**The Natural Garden, Inc.**

38W443 Highway 64

St. Charles, IL 60175

630-584-0150

[thenaturalgardeninc.com](http://thenaturalgardeninc.com)

## Native Prairie Seed and Plants

DESIGN • INSTALLATION • RESTORATION

**500 Species of Native  
Seeds & Plants**

**Natural Landscaping of  
Corporate Campuses**

**Prairie & Wetland  
Restoration**

**Planting Design  
& Installation**



Phone: 608.897.8641 • Fax: 608.897.8486

email: [info@appliedeco.com](mailto:info@appliedeco.com)

[www.appliedeco.com](http://www.appliedeco.com)

Subsidiary of Applied Ecological Services, Inc.



**g**reen



dwelt in possibility  
—emily dickinson

- open spaces • green homes •
- holistic schools • walking trails •
- connected community •
- organic foods and farms •
- endless possibilities •



live the life you've imagined  
—thoreau

[www.fieldsneighborhood.org](http://www.fieldsneighborhood.org)

# OUT BACK NURSERY, INC.

"Where Ecology and Horticulture Unite"™

Specializing in  
**Native trees,  
shrubs &  
perennials.**

Consulting, Design  
& Landscape  
Installation.



"May we be your guides?"™

(651) 438-2771 • (651) 438-3816 Fax  
Toll-Free (800) 651-3626

15280 110th Street South  
Hastings, Minnesota 55033

[www.outbacknursery.com](http://www.outbacknursery.com)

Hours: Monday - Friday 8 to 5 PM  
Saturday - 9 to 4 PM  
Or by appointment.

**The largest selection of native plants in the region.**

**Native Seed Mixes • Live Stakes & Fascines  
Plant Plugs & Gallons • Design Consultation  
Site Inspections • Bare-root Trees & Shrubs**

[nurserysales@JFNNew.com](mailto:nurserysales@JFNNew.com) 574.586.2412 [www.JFNNew.com](http://www.JFNNew.com)



## Meet New Friends at Prairie Nursery

Prairie Nursery specializes in hardy native flowers and grasses for prairies, woodlands and wetlands.

We have a large selection of plant gardens and seed mixes for virtually any soil, moisture or light conditions.

Prairie Nursery offers professional consulting and installation services.

Visit our website to sign up for our new free e-newsletter!

**Get Your Free Prairie Nursery  
2010 Catalog & Growing Guide**

**Call toll-free at 800-476-9453**

If you can't visit our nursery, please visit us online at:  
[www.prairienursery.com](http://www.prairienursery.com)

**Guided Tours are the  
3rd Saturday of June & August  
at 10 AM and 1 PM  
Saturday, June 19, 2010  
Saturday, August 21, 2010**

Self-guided tours any time!  
Private tours with groups of 20 or  
more, please call for appointment.

Visit our retail store for select  
plants, seeds and books.

**Retail Store Hours:  
9 AM - 5 PM Mon - Fri  
(April 9th - Oct. 8th)**

**9 AM - 4 PM Saturdays  
(April 10th - Sept 25th)**

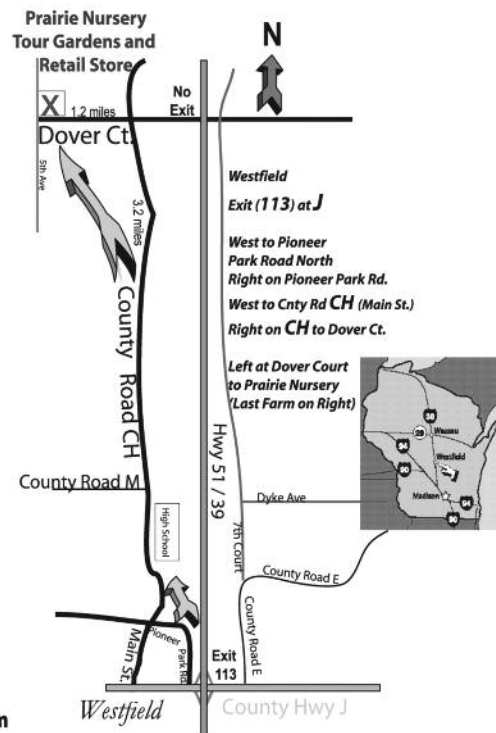
Retail Store Phone: (608) 296-2914



P.O. Box 306 Westfield, WI 53964

Email us at: [cs@prairienursery.com](mailto:cs@prairienursery.com)

## Visit Our Retail Store & Explore Our Display Gardens!





# Our Business Members and Not-For-Profit Affiliate Members

When looking for products and services, remember that our Business and Affiliate members, along with our Journal advertisers share the goals and ideals of Wild Ones everywhere.

## NEW BUSINESS MEMBERS

**De Pere Greenhouse & Floral, LLC**  
1190 Grant St  
De Pere WI 54115  
(920) 336-8992  
niedzw@uwgb.edu  
www.deperefloralwi.com  
*Green Bay Chapter*

**Good Oak Ecological Services**  
205 Walter St  
Madison WI 53714  
(608) 209-0607  
frank@goodoakllc.com  
www.goodoakllc.com  
*Madison Chapter*

**Stonepocket Inc**  
661 Conestoga Trail  
PO Box 0442  
Chanhassen MN 55317  
(952) 974-1407  
tim@heelan.net  
www.stonepocket.com  
*Twin Cities Chapter*

## RENEWING BUSINESS MEMBERS

**Agrecol Corp**  
2918 Agriculture Dr  
Madison WI 53718-6770  
(608) 226-2544  
mary.delarosa@agrecol.com  
www.agrecol.com  
*Madison Chapter*

**EarthWild Gardens**  
1479 Potawatomi Rd  
Grayslake IL 60030-3531  
(847) 287-7477  
info@earthwildgardens.com  
www.earthwildgardens.com  
*Lake-To-Prairie Chapter*

**Formecology LLC**  
210 Cemetery Rd  
Evansville WI 53536  
(608) 882-6656  
info@formecology.com  
http://www.formecology.com  
*Madison Chapter*

**Hickory Road Gardens**  
2041 Hickory Rd  
Mosinee WI 54455  
(715) 693-6446  
brayherb@mtc.net  
*Central Wisconsin Chapter*

**JFNew & Associates, Inc**  
708 Roosevelt Rd  
Walkerton IN 46574  
(574) 586-3400  
lcooper@jfnew.com  
www.jfnew.com  
*Gibson Woods Chapter*

**Johnson's Nursery Inc**  
W180 N6275 Marcy Rd  
Menomonee Falls WI 53051-5599  
(262) 252-4988  
patw@johnsonsnursery.com  
www.johnsonsnursery.com  
*Menomonee River Area Chapter*

**NES Ecological Services**  
4664 Golden Pond Park Ct  
Hobart WI 54155-9292  
(920) 499-5789  
jhavel@releeinc.com  
www.releeinc.com/NES  
*Green Bay Chapter*

**Prairie Restorations Inc**  
31922 128th Street  
PO Box 327  
Princeton MN 55371-0327  
(763) 389-4342  
info@prairieresto.com  
www.prairieresto.com  
*St. Croix Oak Savanna Chapter*

**Tallgrass Restoration LLC**  
2221 Hammond Dr  
Schaumburg IL 60173  
(877) 699-8300  
noelle.hoeffner@tallgrassrestoration.com  
www.tallgrassrestoration.com  
*North Park Village Nature Center Chapter*

## NOT-FOR PROFIT AFFILIATE ORGANIZATION MEMBERS

Already several organizations have joined this new membership category.

**MCC Gardening Association**  
**Mott Community College**  
1401 E Court St  
Flint MI 48503  
(810) 762-0455  
rebecca.gale@mcc.edu  
www.gardening.mcc.edu  
*Flint River Chapter*

**Heckrodt Wetland Reserve**  
1305 Plank Rd  
Menasha WI 54952-0554  
(920) 720-9349  
heckrodtwetland.tk@tds.net  
www.heckrodtwetland.com  
*Fox Valley Area Chapter*

**Outagamie County Housing Authority**  
3020 E Winslow Ave  
Appleton WI 54911-8994  
(920) 731-9781x201  
jlincoln@outagamiehousing.us  
www.outagamiehousing.us  
*Fox Valley Area Chapter*

**The Bridge-Between Retreat Center**  
4471 Flaherty Lane  
Denmark WI 54208  
(920) 864-7230  
bbrci@theglobalnet.net  
www.bridge-between.org  
*Green Bay Chapter*

**Kalamazoo Nature Center**  
7000 N Westnedge Ave  
Kalamazoo MI 49007  
(269) 381-1574x17  
sreding@naturecenter.org  
www.naturecenter.org  
*Kalamazoo Area Chapter*

**Chippewa Nature Center**  
400 S Badour Rd  
Midland MI 48640  
(989) 631-0830  
dtouvell@chippewanaturecenter.org  
www.chippewanaturecenter.org  
*Mid-Mitten Chapter*

**Chicago Botanic Garden Library**  
1000 Lake Cook Rd  
Glencoe IL 60022-1169  
(847) 835-8202  
library@chicagobotanic.org  
*North Park Village Nature Center Chapter*

## INVASIVES ON THE HORIZON

CONTINUED FROM PAGE 7

Some advise against this method since – besides being a lot of work – it spreads the rhizome fragments and disturbs the soil, making it easier for new knotweed to get established.

Our local nature center appears to have had some success with another method. They immediately cut down any emerging sprouts throughout the entire growing season, trying to starve it to death.

Inspired, my husband faithfully traveled to church with his scythe each week last summer. He scouted for each new sprout popping up, and chopped off its little head. As doubts crept in toward the end of summer, he escalated the battle, applying glyphosate (e.g., RoundUp®) on the cut stems.

He's preparing to enter the church-ground battlefield again this year, trusty blade in hand, (somewhat) confident of eventual victory. Who will win – my husband or the killer bamboo? Wifely loyalty demands that I bet on my husband, but more objective on-lookers may have doubts. As David Beaulieu on About.com<sup>2</sup> commented: "You slash Japanese knotweed plants to the ground, but they come back. You root them out and burn them on a would-be funeral pyre; but it is only you who feels dead, fatigued from all your labors...Japanese knotweed may not be the fabled Godzilla let loose to wreak havoc across a cringing populace. But it's the closest thing that you'll find to Godzilla in the plant world."

Poor guy. I better have a nice cup of tea waiting at home for him. But those knotweed sprouts are edible. Maybe I'll make him an apple and knotweed pie,<sup>3</sup> too. ▲

1. [www.invasivespeciesinfo.gov/plants/knotweed.shtml](http://www.invasivespeciesinfo.gov/plants/knotweed.shtml).
2. [landscaping.about.com/cs/weedsdiseases/a/knotweed.htm](http://landscaping.about.com/cs/weedsdiseases/a/knotweed.htm).
3. Recipe at [www.wildmanstevebrill.com/Web%20Recipes/Apple%20and%20Knotweed%20Pie.html](http://www.wildmanstevebrill.com/Web%20Recipes/Apple%20and%20Knotweed%20Pie.html).

**NORTHERN SUNSET PERENNIALS**

*Nursery-grown*

**NATIVE PLANTS OF THE MIDWEST**

*for prairie, woodland or natural garden.*

Look for  
**NATIVE Naturally!**  
on the tag.

*At many fine garden centers in:*

SOUTHEAST WISCONSIN  
CENTRAL WISCONSIN  
NORTHERN ILLINOIS

*Find them at*

**WWW.NORTHERNSUNSET.COM.**

# The Meeting Place

Chapters, please send your  
chapter contact information to:  
Meeting Place Coordinator Mary Paquette  
N2026 Cedar Road • Adell, Wisconsin 53001  
920-994-2505 • [meeting@for-wild.org](mailto:meeting@for-wild.org)  
Chapter ID numbers are listed after names.



Meet us online at [www.for-wild.org/calendar.html](http://www.for-wild.org/calendar.html)

## COLORADO

**Front Range Chapter #86 (Seedling)**  
Susan Smith 303-921-7337  
[Susan@TheHabitatGardener.com](mailto:Susan@TheHabitatGardener.com)

## CONNECTICUT

**Mountain Laurel Chapter #78**  
Kathy T. Dame 860-439-5060  
[ktdame@comcast.net](mailto:ktdame@comcast.net)

## ILLINOIS

**Greater DuPage Chapter #9**  
Pat Clancy 630-964-0448 [clancypj@sbcglobal.net](mailto:clancypj@sbcglobal.net)

**Northern Kane County #88**  
Pat Hill 847-741-7284 [hill\\_p@sbcglobal.net](mailto:hill_p@sbcglobal.net)

**Lake-To-Prairie Chapter #11**  
Karin Wisiol 847-548-1650 [kawisiol@pcbb.net](mailto:kawisiol@pcbb.net)

**Macomb Chapter #42 (Seedling)**  
Margaret Ovitt 309-836-6231  
[card@macomb.com](mailto:card@macomb.com)

**North Park Chapter #27**  
Wilma McCallister  
[bug788@gmail.com](mailto:bug788@gmail.com)

**Rock River Valley Chapter #21**  
Constance McCarthy 815-282-0316  
[kublaikhan@mac.com](mailto:kublaikhan@mac.com)

## INDIANA

**Gibson Woods Chapter #38**  
Joy Bower 219-844-3188 [jbower1126@aol.com](mailto:jbower1126@aol.com)  
Pat Rosenwinkel [patrosen@sbcglobal.net](mailto:patrosen@sbcglobal.net)

## KENTUCKY

**Lexington Chapter #64**  
Ann Bowe 859-509-4040  
[annbowe@annbowedesigns.com](mailto:annbowe@annbowedesigns.com)

**Louisville Metrowild Chapter #26**  
Rick Harned 502-897-2485  
[r.harned@insightbb.com](mailto:r.harned@insightbb.com)  
[wildones-lou@insightbb.com](mailto:wildones-lou@insightbb.com)

## MICHIGAN

**Ann Arbor Chapter #3**  
Susan Bryan 734-622-9997  
[susanbryanhsieh@yahoo.com](mailto:susanbryanhsieh@yahoo.com)

**Calhoun County Chapter #39**  
Jackie Holdsworth  
517-629-5088

**Central Upper Peninsula Chapter #61**  
Jeanne Rose 906-789-1442  
[jeannerose@chartermi.net](mailto:jeannerose@chartermi.net)  
Tom Tauzer 906-428-3203 [ttauzer@chartermi.net](mailto:ttauzer@chartermi.net)

**Detroit Metro Chapter #47**  
Connie Manley 248-538-0654  
[cmanfarm@mich.distance.net](mailto:cmanfarm@mich.distance.net)

**Flint River Chapter #32**  
Rebecca Gale-Gonzales 810-715-3754  
[rebecca.gale@mcc.edu](mailto:rebecca.gale@mcc.edu)

**Houghton-Hancock Chapter #60 (Seedling)**  
Kristine Bradof 906-482-0446 [kbradof@mtu.edu](mailto:kbradof@mtu.edu)

## Kalamazoo Area Chapter #37

Dave Wendling 269-624-6946 [davewndling@aol.com](mailto:davewndling@aol.com)  
Tom Small 269-381-4946 [yard2prairy@aol.com](mailto:yard2prairy@aol.com)

## Mid-Mitten Chapter #80

Dawn Zuengler 989-430-7735  
[dzuengler@yahoo.com](mailto:dzuengler@yahoo.com)

## North Oakland Chapter #91

Barbara Bray 248-601-6405  
[brayfamily\\_mi@comcast.net](mailto:brayfamily_mi@comcast.net)

## Oakland Chapter #34

Barbara Bray 248-601-6405  
[brayfamily\\_mi@comcast.net](mailto:brayfamily_mi@comcast.net)

## Red Cedar Chapter #41

Kathy Prelesnik 517-580-8322  
[bottletreegirl@yahoo.com](mailto:bottletreegirl@yahoo.com)

## River City - Grand Rapids Area Chapter #83

Amy Heilman 616-308-8176  
[amy.heilman@sbcglobal.net](mailto:amy.heilman@sbcglobal.net)  
Kory Manion 616-307-7446  
[koryquimby@hotmail.com](mailto:koryquimby@hotmail.com)

## MINNESOTA

**Arrowhead Chapter #48**  
Carol Andrews 218-529-8204  
[candrews@barr.com](mailto:candrews@barr.com)

**Brainerd Chapter #90**  
Eleanor Burkett 218-232-4847  
[erburkett@live.com](mailto:erburkett@live.com)

**Otter Tail Chapter #25**  
Teresa Jaskiewicz 218-736-0137  
[tjnaturenerd@gmail.com](mailto:tjnaturenerd@gmail.com)

**St. Cloud Chapter #29**  
Brian Johnson 320-356-9462  
[bjohnson@csbsju.edu](mailto:bjohnson@csbsju.edu)

**St. Croix Oak Savanna Chapter #71**  
Diane Hilscher 651-436-3836  
[hilscherdesign@comcast.net](mailto:hilscherdesign@comcast.net)  
Roger Miller [st.croix.wild.ones@mac.com](mailto:st.croix.wild.ones@mac.com)

**Twin Cities Chapter #56**  
Marty Rice 952-927-6531 [jcrnfr@msn.com](mailto:jcrnfr@msn.com)

## MISSOURI

**Mid-Missouri Chapter #49**  
Susan Melia-Hancock 573-442-3670  
[susan.meliahancock@gmail.com](mailto:susan.meliahancock@gmail.com)

**St. Louis Chapter #31**  
Ed Schmidt 314-647-1608  
[eschmidt1@sbcglobal.net](mailto:eschmidt1@sbcglobal.net)

## NEW YORK

**Habitat Gardening in Central New York #76**  
Janet Allen 315-487-5742  
[hg.cny@verizon.net](mailto:hg.cny@verizon.net)

**Niagara Falls & River Region Chapter #87**  
Michelle Vanstrom 716-913-5324  
[vanshel400@aol.com](mailto:vanshel400@aol.com)

## OHIO

**Akron #99 (Seedling)**  
Kim Downs [kimdowns@smithersmail.com](mailto:kimdowns@smithersmail.com)

## Greater Cincinnati Chapter #62

Chris McCullough 513-860-4959  
[iluvdirt@fuse.net](mailto:iluvdirt@fuse.net)

## Columbus Chapter #4

Jann Offutt [joffutt@columbus.rr.com](mailto:joffutt@columbus.rr.com)

## Oak Openings Region Chapter #77

Stephanie Saba 419-261-7000  
[nativebeauty3@gmail.com](mailto:nativebeauty3@gmail.com)

## Western Reserve Chapter #73

Barb Holtz 440-247-7075  
[bph@clevelandmetroparks.com](mailto:bph@clevelandmetroparks.com)

## PENNSYLVANIA

**Habitat Resource Network of  
Southeast Pennsylvania Chapter #79**  
Maureen Carbery 484-678-6200  
[pahabitat@comcast.net](mailto:pahabitat@comcast.net)

## WISCONSIN

**Central Wisconsin Chapter #50**  
Dan Dieterich 715-346-2849  
[dan.dieterich@uwsp.edu](mailto:dan.dieterich@uwsp.edu)

**Door County Chapter #59**  
Peter Sigman 920-824-5193 [peter@sigmann.net](mailto:peter@sigmann.net)

**Fox Valley Area Chapter #8**  
Kristin L. Kauth 920-766-2292  
[kkauth@sbcglobal.net](mailto:kkauth@sbcglobal.net)

**Green Bay Chapter #10**  
Bonnie Vastag 920-217-7737  
[norway995@gmail.com](mailto:norway995@gmail.com)

**Madison Chapter #13**  
Laurie J. Yahr 608-274-6539  
[yahrkahl@sbcglobal.net](mailto:yahrkahl@sbcglobal.net)  
Barb Glassel 608-819-0087 [bglassel@gmail.com](mailto:bglassel@gmail.com)

**Menomonee River Area Chapter #16**  
Jan Koel 262-251-7175  
Carolyn Larkin 414-881-4017  
[plantlarkin@gmail.com](mailto:plantlarkin@gmail.com)

**Milwaukee North Chapter #18**  
Dorothy Boyer 262-375-3913

**Milwaukee Southwest-Wehr Chapter #23**  
Message Center: 414-299-9888x2

**Root River Area Chapter #43**  
Nan Calvert 262-681-4899  
[native.plant.calvert@gmail.com](mailto:native.plant.calvert@gmail.com)

**Sheboygan Area Tension Zone Chapter #81**  
Jeff Kelm 920-803-0704  
[kelm@att.net](mailto:kelm@att.net)

**Wolf River Chapter #74**  
Mary Kuester 715-526-3401  
Sue Templeman [boosue@frontiernet.net](mailto:boosue@frontiernet.net)

For information about starting a chapter in  
your area: [www.for-wild.org/chapters.html](http://www.for-wild.org/chapters.html).



## Architecture

Commercial & Residential  
Sustainable Design

Business Continuity—  
Disaster Planning

Facility Assessments  
Forensic Investigations

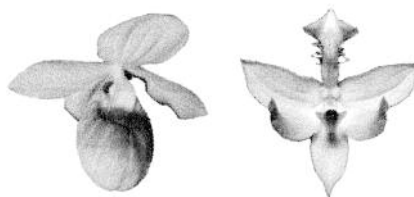
Contract Administration  
Project Management



## ONE Plus, Inc.

113 West Main  
Sun Prairie, WI 53590-2905  
e-mail: [oneplus@chorus.net](mailto:oneplus@chorus.net)  
608/837-8022 Fax 608/837-8132

Wisconsin, Iowa, Illinois & Minnesota  
Five percent of Wild Ones-generated  
fees will be donated to Wild Ones  
National general operating fund.  
Reference this ad to help support  
our national activities.



## Love Orchids?

We have been growing orchids  
from seed in our laboratory since  
1989 from local genetic stock.

Come see these and other fine  
native plants at the Dane County  
Farmers' Market or at the farm  
(call ahead for hours). Complete  
list on our web site,  
[www.bluestemfarm.com](http://www.bluestemfarm.com)

Bluestem Farm  
S5920 Lehman Rd.  
Baraboo, WI 53913  
608-356-0179

## Great Stuff at the Wild Ones Store



**Wild Ones "Roots" T-Shirts, Hats,  
and Caps** Featuring the famous  
"Roots" drawing, these shirts clearly  
project a great message, and look  
great doing it – while our hats and  
caps let everyone know just how  
wild you really are. Hats are **\$18**.  
Caps are **\$15**. Available with short  
sleeves and long sleeves, these  
t-shirts come in lots of colors and  
styles, and start at just **\$20**.

### Landscaping With Native Plants

This Wild Ones book  
answers many of the  
questions you have  
about native plants  
and natural landscap-  
ing: What is it? Why is  
it beneficial? What kinds of plants?  
How do I do it? Where do I find  
seeds and plants? **\$10**



### Wild Ones Yard Sign

This enameled, weath-  
erproof sign not only  
looks great, but also  
lets everyone know  
that your yard is in  
harmony with nature.  
**\$27**



**Landscaping With Native Plants  
of Wisconsin (and Michigan and  
Minnesota)** Aimed at beginners and  
veteran gardeners alike, this book is  
designed to help gardeners find,  
plant, and maintain the best native  
species for their specific sites, how-  
ever modest or lavish. Sorry –  
Wisconsin book is sold out. **\$30**

**Online Shopping Is Easy With  
PayPal. Just use your credit card  
with or without a PayPal account.**

For more information, contact the  
National Office at 877-394-9453.  
Checks payable to Wild Ones at:  
Wild Ones Merchandise, P.O. Box 1274,  
Appleton, Wisconsin 54912. Prices  
include shipping and handling. For  
maximum convenience, order online  
at [www.for-wild.org/store/](http://www.for-wild.org/store/).



The Clearing is an adult "folk  
school" founded in 1935 by  
renowned landscape architect, Jens  
Jensen. One of the pioneers of the  
native plant movement, Jensen  
believed that one's own regional  
ecology and culture is fundamental  
to all "clear" thinking.



On the State and National  
Registers of Historic Places

ELLISON BAY, WISCONSIN  
TOLL FREE: 877.854.3225  
[WWW.THECLEARING.ORG](http://WWW.THECLEARING.ORG)



*Hardy,  
field-grown plants  
perfect for our  
Wisconsin climate.  
Visit our unique shop  
filled with dried flowers  
and gifts for the gardener.*

## Monches Farm

Since 1980  
Prairie Plants,  
Perennials & Ferns

5890 Monches Rd.  
Town of Erin  
In the scenic Holy Hill area  
262-966-2787  
[www.monchesfarm.com](http://www.monchesfarm.com)

Summer Hours:  
Tuesday-Friday 10-5  
Sat. & Sun. 10-4  
CLOSED MONDAYS

go native!  
door landscape  
& nursery

native plants  
sustainable landscapes  
intelligent design

consulting, design, installation,  
landscape care, stewardship planning  
& invasive species control.

incorporating clients personal &  
aesthetic values & functional needs.  
greatly reducing long term costs of  
property ownership

nursery open 10 - 4 daily  
may thru october

offering over 185 native species of local  
& regional genotype, plus educational  
demonstration gardens. visit our website  
often for upcoming events & promotions.

920-746-9770

6329 hwy 42 egg harbor  
door county wi

[www.doorlandscape.com](http://www.doorlandscape.com)

## Don't Put a Square Plant in a Round Garden.

Growing native perennials  
from the St. Croix Valley in  
your garden just makes  
sense. Your  
garden will grow better  
and be healthier for  
your yard  
and ecosystem.

Let our horticulturist or  
master gardener help you  
decide which native plants  
fit best for you.

Open Seasonally  
Weekends



235 State Road 65 • River Falls, WI 54022  
Phone 715-425-7605 • [www.kinninatives.com](http://www.kinninatives.com)

Yes, We Do Mail Order.



## Prairie Seed Source

P.O. Box 83, North Lake  
Wisconsin 53064-0083

Over 170 species from southeastern  
Wisconsin prairies



PLEASE  
SEND  
\$1 FOR  
SEED  
CATALOG

Bob Ahrenhoerster,  
Prairie Restoration  
Specialist



VISIT OUR WEB SITE AT <http://www.Ameritech.net/users/rasillon/Seed.html>

### "Natural" Burial Space in a Wisconsin Prairie



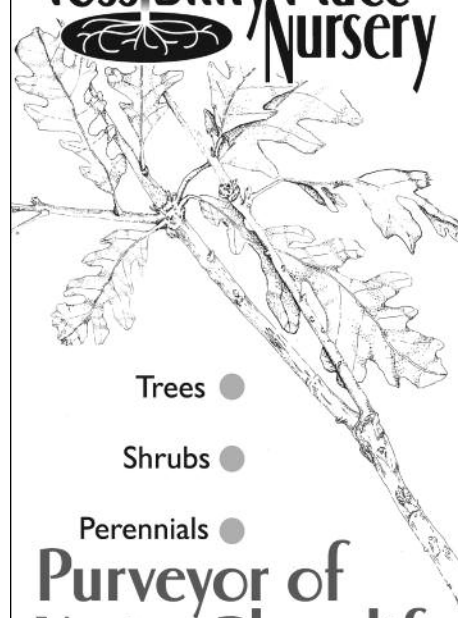
Black-Eyed  
Susans-2009



"PRAIRIE REST" managed by: 200 Acre Forest Home Cemetery  
414.645.2632 • [tomk@foresthomcemetary.com](mailto:tomk@foresthomcemetary.com)  
Milwaukee WI • Non Profit Since 1850

Save \$225 when purchasing Pre-Need -. \$1270)\*  
"Natural only, no vaults, only biodegradable material"  
(granite boulder memorialization included)\*

## Possibility Place Nursery



Trees ●

Shrubs ●

Perennials ●

## Purveyor of Native Plant life

Phone: 708-534-3988

Fax: 708-534-6272  
[www.possibilityplace.com](http://www.possibilityplace.com)



## Solutions for the Natural Landscaper

### Design and Installation

- Natural landscaping using native plants – prairie, shade, and wetland environments
- Raingardens
- Retaining walls – natural and block (green and plantable)
- Patios – Flagstone & flat rock and permeable, porous and water-retaining pavers

### Maintenance

- Prairie burns
- Restoration
- Bio-detention
- Weed & invasive species control

### Lake Shore Cleaners, Inc.

4623 N. Richmond Street  
Appleton, Wisconsin 54913  
920-734-0747



## Join Wild Ones

As part of our **Grow Wild Ones** campaign, we have recently updated, revamped, and reproduced the popular **Wild About Wildflowers** video in DVD format. And now you can get your own copy at no extra charge when you join Wild Ones or upgrade your existing membership level. See page 14 for full information about this great video.



**New Members:** Join at any membership level, and get the DVD at no extra cost.

**Existing Members:** Get a free copy of our **25 Years of Wild Ones** book free when you renew at the Wild level. Or renew at the Wilder or Wildest level, and get the book and the DVD at no extra cost.

Name \_\_\_\_\_

Address \_\_\_\_\_

City \_\_\_\_\_

State/Zip \_\_\_\_\_

Phone \_\_\_\_\_

E-Mail \_\_\_\_\_

| Annual Dues                                | Wild  | Wilder                         | Wildest                            |
|--|---|--------------------------------|------------------------------------|
| Household                                  | <input type="checkbox"/> \$30   | <input type="checkbox"/> \$50  | <input type="checkbox"/> \$75+     |
| Business                                   | <input type="checkbox"/> \$200  | <input type="checkbox"/> \$500 | <input type="checkbox"/> \$1000+   |
| Not-for-Profit                             |   |                                |                                    |
| Affiliate Organization                     | <input type="checkbox"/> \$75   | <input type="checkbox"/> \$100 | <input type="checkbox"/> \$125     |
| Limited income/full-time student household |   |                                | <input type="checkbox"/> \$20/year |
| Lifetime                                   | <input type="checkbox"/> \$1200 (or payable in three annual \$400 installments) |                                |                                    |

I am joining at the ☐ \$50 or higher level.  
☐ \$75 or higher level.

I also enclose \$ \_\_\_\_\_  
☐ for The WILD Center  
☐ for Seeds for Education

Please check: ☐ New ☐ Renewal  
☐ New contact information

Amount enclosed \$ \_\_\_\_\_ for \_\_\_\_\_ years.

**Chapter preference** (See chapter listing on page 20.)

### Do you want the free Wild About Wildflowers DVD?

If you are joining as a new member, or renewing as a Wilder or Wildest member, you qualify for a free copy of our Wild About Wildflowers DVD. Please check here if you want the free DVD. ☐

### Do you want the free 25 Years of Wild Ones book?

If you are renewing at the Wild or Wildest level, you qualify for a free copy of our 25 Years of Wild Ones book. Please check here if you want the free book. ☐

### If this is a gift membership:

Your Name \_\_\_\_\_

Occasion for Gift \_\_\_\_\_

The entire membership fee is tax deductible.

**Wild Ones • P.O. Box 1274 • Appleton, Wisconsin 54912**

## Mark Your Calendars

**May 22 – The 2nd quarter national board meeting** will be hosted by the St. Croix (MN) Chapter of Wild Ones, and will begin at 9 a.m. Following the meeting, we'll enjoy a picnic lunch at one of the chapter board member's home, and see a re-landscaped yard designed primarily with natives. The woodland plants should be especially nice in May. Then we'll drive to Belwin Conservancy to see their wonderful remnant prairie savanna, where ecological director, Tara Kelly, will lead us on a field trip.

**August 6, 7, and 8 – The 2nd Annual Midwest Native Plant Conference "Connect People and Nature"** co-hosted by Greater Cincinnati (OH) Wild Ones will be held at the Bergamo Center. If you have questions, or would like more information about the conference please go to [www.cincinnatiwildones.com/mwnp/](http://www.cincinnatiwildones.com/mwnp/). You may also contact Kathy McDonald at [kmc@one.net](mailto:kmc@one.net), or call 513-941-6497 any evening.

**August 28 – The 3rd quarter national board meeting** will be by web conference, and will begin at 9 a.m. central time. Calling instructions will be included in the agenda.

**November 5 & 6 – The 4th quarter national meeting and the 2010 Annual Membership Meeting and Conference** will be held at Connecticut College, New London, Connecticut, and hosted by the Mountain Laurel (CT) Chapter of Wild Ones in conjunction with the Arboretum's annual SALT Conference. The board meeting will be held November 5th from 4:00 to 6:00 p.m. Further information about SALT appeared on page 8 of the November/December 2008 issue of the *Journal*.



P.O. Box 1274  
Appleton, WI 54912-1274  
www.for-wild.org

ADDRESS SERVICE REQUESTED  
DATED MATERIAL

NONPROFIT ORG.  
US POSTAGE  
**PAID**  
PERMIT NO 90  
OSHKOSH, WI

### Is your membership OK? How about your address?

If the imprint above is dated **7/1/10** or **8/1/10** or **before**, your membership is about to expire.

**Money Going Down the Drain!** If you are moving, either temporarily or permanently, please let the National Office know as soon as your new address is official. Returned and forwarded mail costs Wild Ones anywhere from \$.77 to \$3.77 per piece. *Each issue this adds up to a lot of money that could be used to support our mission.*



**How You Can Help.** When planning a long vacation, or a move, please mail your address information to Wild Ones, P.O. Box 1274, Appleton, Wisconsin 54912, call toll-free at 877-394-9453, or go to the Wild Ones members-only pages at [www.for-wild.org](http://www.for-wild.org). Click on item 2 (Update Personal Membership Info) and enter the appropriate changes. *Thanks!*

## THANK YOU

### LIFETIME MEMBERS

**Rodman E Doll** Ann Arbor (MI) Chapter  
**Sybilla S & Peter Prest** Columbus (OH) Chapter  
**Robert & Joan Schaupp** Door County (WI) Chapter  
**Mariette & Dave Nowak** Milwaukee-Southwest/Wehr (WI) Chapter  
**Michelle Vanstrom** Niagara Falls and River Region (NY) Chapter  
**Mary & John Thiesing** Rock River Valley (IL) Chapter

### MATCHING GIFTS

**Diane & David Fell** Fox Valley Area Chapter (WI)  
**1:1 Kimberly Clark Foundation** – Gift Matching  
**Robert & Carol Niendorf** Fox Valley Area (WI) Chapter  
**% of Purchase - Morton Drug**  
**Joann C Sustachek** Root River Area (WI) Chapter  
**1:1 Abbott Lab Employee Giving Campaign**

### GENERAL OPERATING FUND

**Florence R & Frank F Gibson** and **Sybilla S & Peter G Prest**  
Columbus (OH) Chapter  
**Mary Jill Geniesse, Herb 'n Garden Club, Judy & Ron Peters,**  
and **Edward Scanlan** Fox Valley Area (WI) Chapter  
**Toni Daniels** and **Melinda Dietrich** Greater Cincinnati (OH) Chapter  
**Stephen Windsor** Greater DuPage (IL) Chapter  
**Derek Stedman** Habitat Resource Network of Southeast Pennsylvania  
Chapter  
**Becky Erickson** Mid-Missouri Chapter  
**Marsha & Richard Krueger, Lucille M Rutkowski** and **Kay M Wosewick**  
Milwaukee-North (WI) Chapter  
**Joanne Wanasek** Milwaukee-Southwest/Wehr (WI) Chapter  
**Kimberly A Barnes** (MD) Partner-at-Large  
**Diane Battisti** Root River Area (WI) Chapter  
**Pam & Mike Brady** Southeast Michigan Chapter  
**Greg Shirley** St Cloud (MN) Chapter  
**Christian Nelson** Twin Cities (MN) Chapter  
**Bob Kehres of Ohio Prairie Nursery** Western Reserve (OH) Chapter

### SEEDS FOR EDUCATION

**David & Karen Edwards** Fox Valley Area (WI) Chapter  
**Jeanne Zasadil** Greater DuPage (IL) Chapter  
**Hildy Feen** Madison (WI) Chapter  
**Herbert H Kohl Charities Inc, Mark & Terri Chelmowski** and **Lorrie Otto**  
Milwaukee-North (WI) Chapter  
**Donna M Gager** Milwaukee-Southwest/Wehr (WI) Chapter  
**Betty & Lowell Edwards** and **Jude Wrzesinski** Rock River Valley (IL)  
Chapter  
**Michelle Serreyn** Southeast Michigan Chapter

### WILD CENTER

**Development**  
**Cindy Worth** Central Wisconsin Chapter  
**David & Karen Edwards** Fox Valley Area (WI) Chapter  
**Toni Daniels** and **Carol Kessler & Lawrence Becker**  
Greater Cincinnati (OH) Chapter  
**Carolynn La Barbera** Lake-To-Prairie (IL) Chapter  
**Lisa J Geer of LJ Geer Design** Madison (WI) Chapter  
**Becky Erickson** Mid-Missouri Chapter  
**Terry & Gail Pavletic** Milwaukee-Southwest/Wehr (WI) Chapter  
**Colleen Jeffords** Mountain Laurel (CT) Chapter  
**David Vido** North Park Village Nature Center (IL) Chapter  
**Darryl & Margery Wahler** Rock River Valley (IL) Chapter  
**Sue Reed** St Louis (MO) Chapter

### IN-KIND

**From Fox Valley Area (WI) Chapter members**  
**Kathy Comqxwvsi** Landscaping books for the library  
**Marvin & Barbara Gossen** Rocking chair for front porch  
**Cathy Larsen** Educational materials on woodlands  
**Donna & John VanBuecken** Bat house  
**From Gibson Woods (IN) Chapter members**  
**Pat Rosenwinkel** Educational materials for the library  
**From Milwaukee-North (WI) Chapter members**  
**Lorrie Otto** personal memorabilia and educational materials for  
the library

### MEMORIALS

**Toward publication of Janice Stiefel's "Inside Story" articles:**  
**Door County (WI) Chapter**  
**George & Vonnie Hoff** Milwaukee-North (WI) Chapter  
**Darlene Johnson** (OR), **Ron & Karen Begalke, Jack & Ruth Fernsler,**  
**Larry & Kathy Gentine, Lou & Michelle Gentine, Jeff & Mary Goelzer,**  
**Dr Mike & Cathie Jacquat, Tom & Judy Kapellen, Karl & Patti Linck,**  
**Chris & Christina Meyer, Sargento Foods, Inc, Mark & Karen Rhyan,**  
**Ed & Ann Sturzl** and **Randy & Kathy Winker** Partners-at-Large (WI)  
**Sally Botsford** Twin Cities (MN) Chapter  
**Toward memorial for Nancy Small:**  
**Paul D & Sally Olexia** and  
**Laura Strehlow & Walt Oberheu**  
Kalamazoo Area (MI) Chapter

### AMAZON COMMISSIONS

Recent two-month commissions  
from **Amazon.Com** – \$235.22.